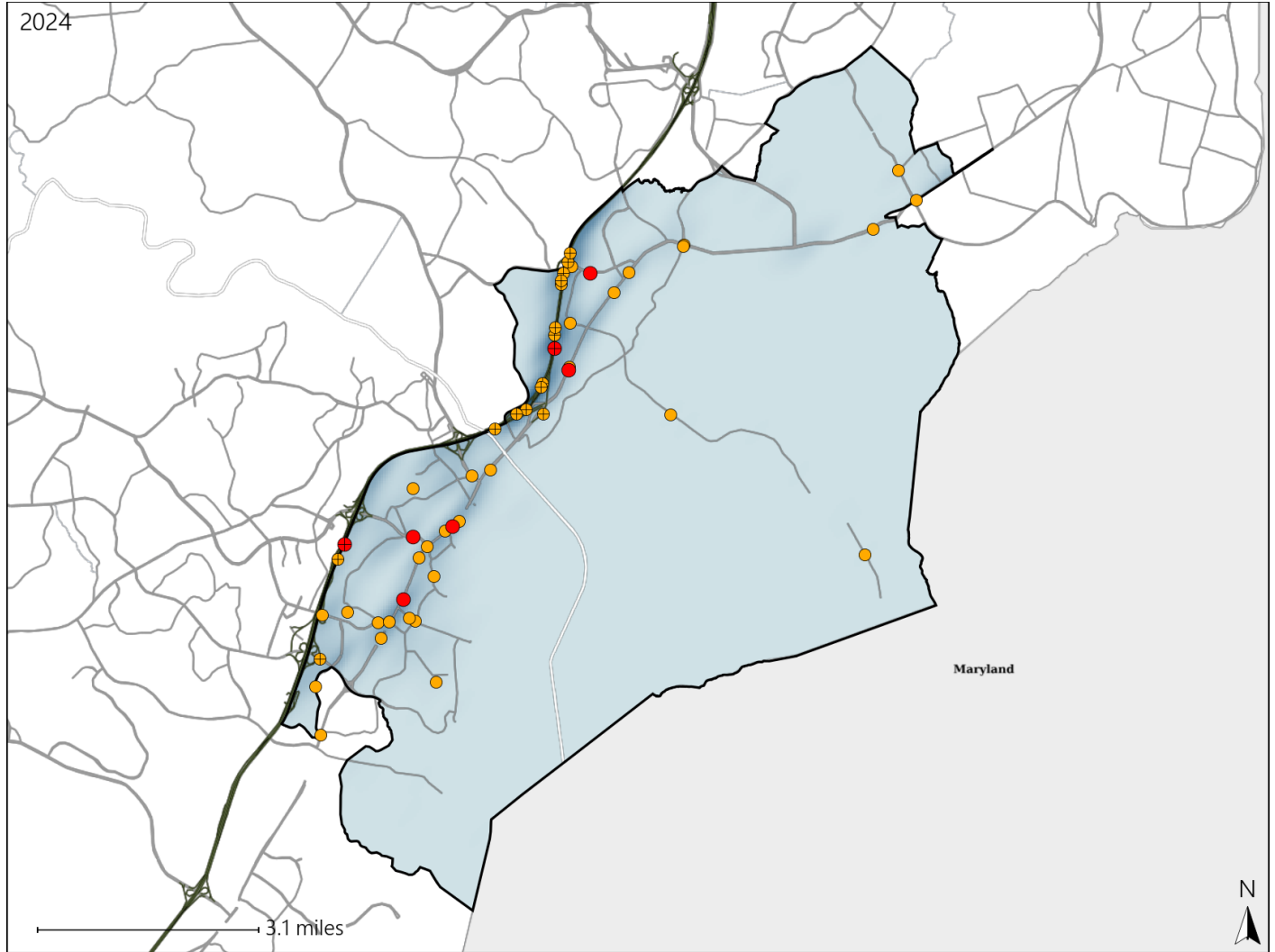


# Virginia House District 19 Crash Statistics

Report Generated March, 2025

	Count	Highest Time Period(s)	Highest Day(s)	Highest Month(s)
<b>Fatal Crashes</b>	<b>7</b>	<b>9:00pm - 11:59pm</b>	<b>Sunday</b>	<b>April • December</b>
<b>Resulting Fatalities</b>	<b>7</b>	(29%)	(43%)	(28%)
<b>Serious Injury Crashes</b>	<b>47</b>	<b>6:00pm - 8:59pm</b>	<b>Saturday</b>	<b>August • January</b>
		(26%)	(17%)	(22%)



### House District 19 Crashes

Interstate Crashes

- Fatal
- Serious Injury

Non-interstate Crashes

- Fatal
- Serious Injury

The blue gradient represents the density of all crashes.

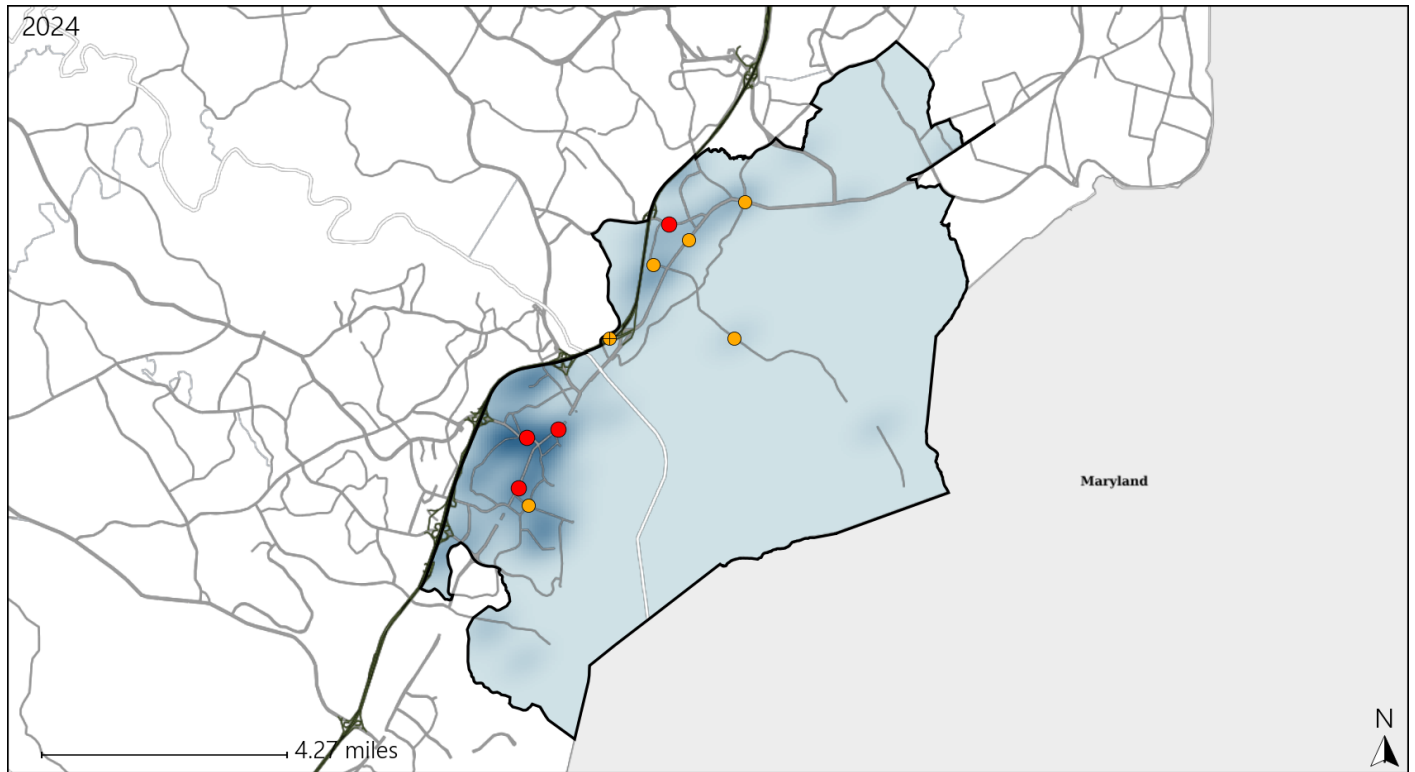


Available Crash Data - Calendar Year (CY)	CY 2021	CY 2022	CY 2023	CY 2024
<b>Total Crashes</b>	<b>1196</b>	<b>1205</b>	<b>1299</b>	<b>1260</b>
<b>Fatal Crashes</b>	<b>5</b>	<b>8</b>	<b>6</b>	<b>7</b>
<b>Injury Crashes</b>	<b>361</b>	<b>342</b>	<b>398</b>	<b>390</b>

# Virginia House District 19 Alcohol Crash Statistics

Report Generated March, 2025

	Count	Highest Time Period(s)	Highest Day(s)	Highest Month(s)
<b>Fatal Crashes</b>	<b>4</b>	<b>9:00pm - 11:59pm</b>	<b>Sunday</b>	<b>April • July</b>
<b>Resulting Fatalities</b>	<b>4</b>	(50%)	(75%)	(50%)
<b>Serious Injury Crashes</b>	<b>7</b>	<b>6:00pm - 8:59pm</b> <b>9:00pm - 11:59pm</b>	<b>Friday • Saturday</b>	<b>July • March</b>
		(58%)	(58%)	(58%)



### House District 19 Alcohol-Related Crashes

Interstate Crashes                      Non-interstate Crashes  
 ● Fatal                                      ● Fatal  
 ⊕ Serious Injury                          ⊕ Serious Injury

The blue gradient represents the density of all alcohol-related crashes.

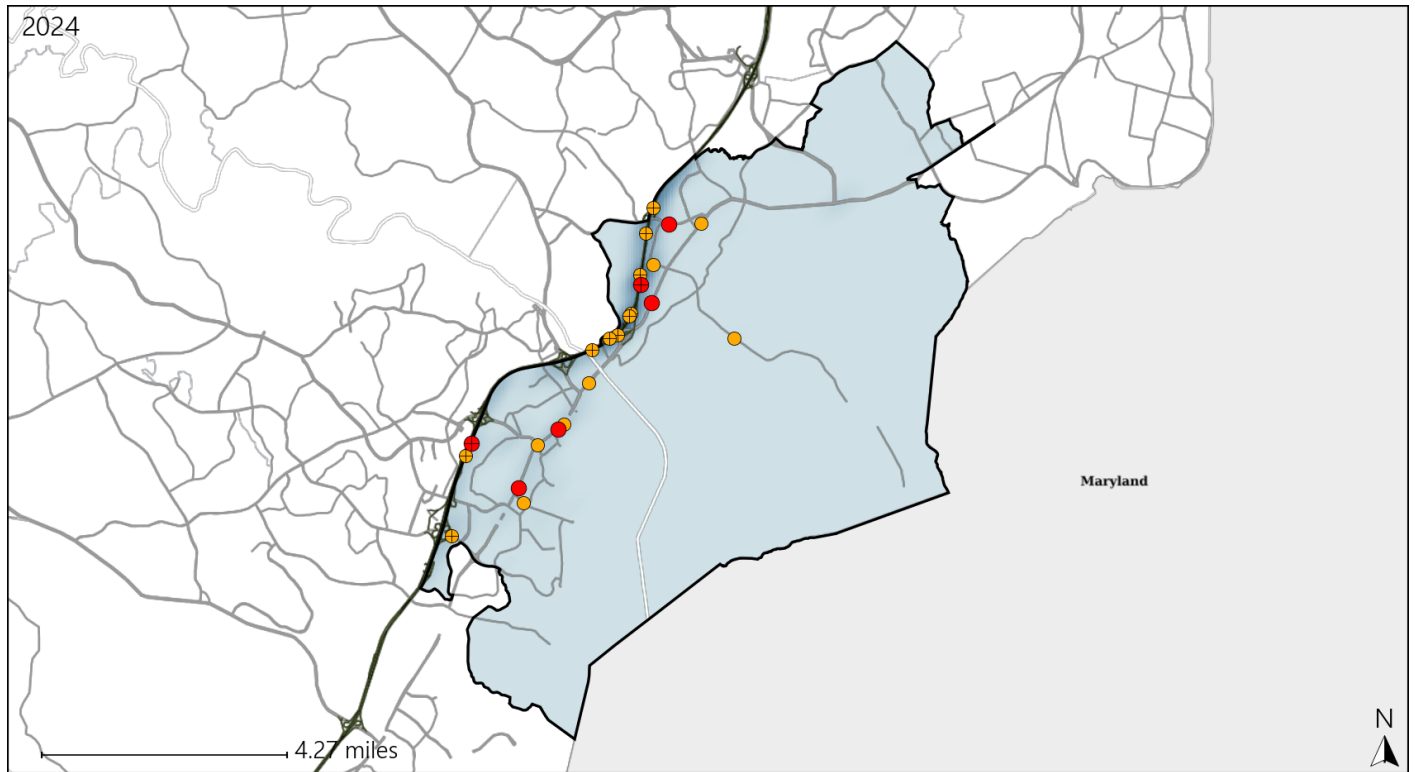


Available Crash Data - Calendar Year (CY)	CY 2021	CY 2022	CY 2023	CY 2024
Total Crashes	1196	1205	1299	1260
Fatal Crashes	5	8	6	7
Injury Crashes	361	342	398	390
Alcohol-Related Fatal Crashes	3	2	2	4
Percent of Alcohol-Related Fatal Crashes to Total Fatal Crashes	60%	25%	33%	57%
Alcohol-Related Injury Crashes	40	25	33	28
Percent of Alcohol-Related Injury Crashes to Total Injury Crashes	11%	7%	8%	7%

# Virginia House District 19 Speed Crash Statistics

Report Generated March, 2025

	Count	Highest Time Period(s)	Highest Day(s)	Highest Month(s)
<b>Fatal Crashes</b>	<b>6</b>	<b>9:00pm - 11:59pm</b>	<b>Sunday • Wednesday</b>	<b>April • December</b>
<b>Resulting Fatalities</b>	<b>6</b>	(33%)	(66%)	(34%)
<b>Serious Injury Crashes</b>	<b>17</b>	<b>6:00pm - 8:59pm</b> <b>9:00pm - 11:59pm</b>	<b>Saturday • Thursday</b>	<b>August • January</b>
		(36%)	(48%)	(36%)



## House District 19 Speed-Related Crashes

Interstate Crashes

- Fatal
- ⊕ Serious Injury

Non-interstate Crashes

- Fatal
- Serious Injury

The blue gradient represents the density of all speed-related crashes.

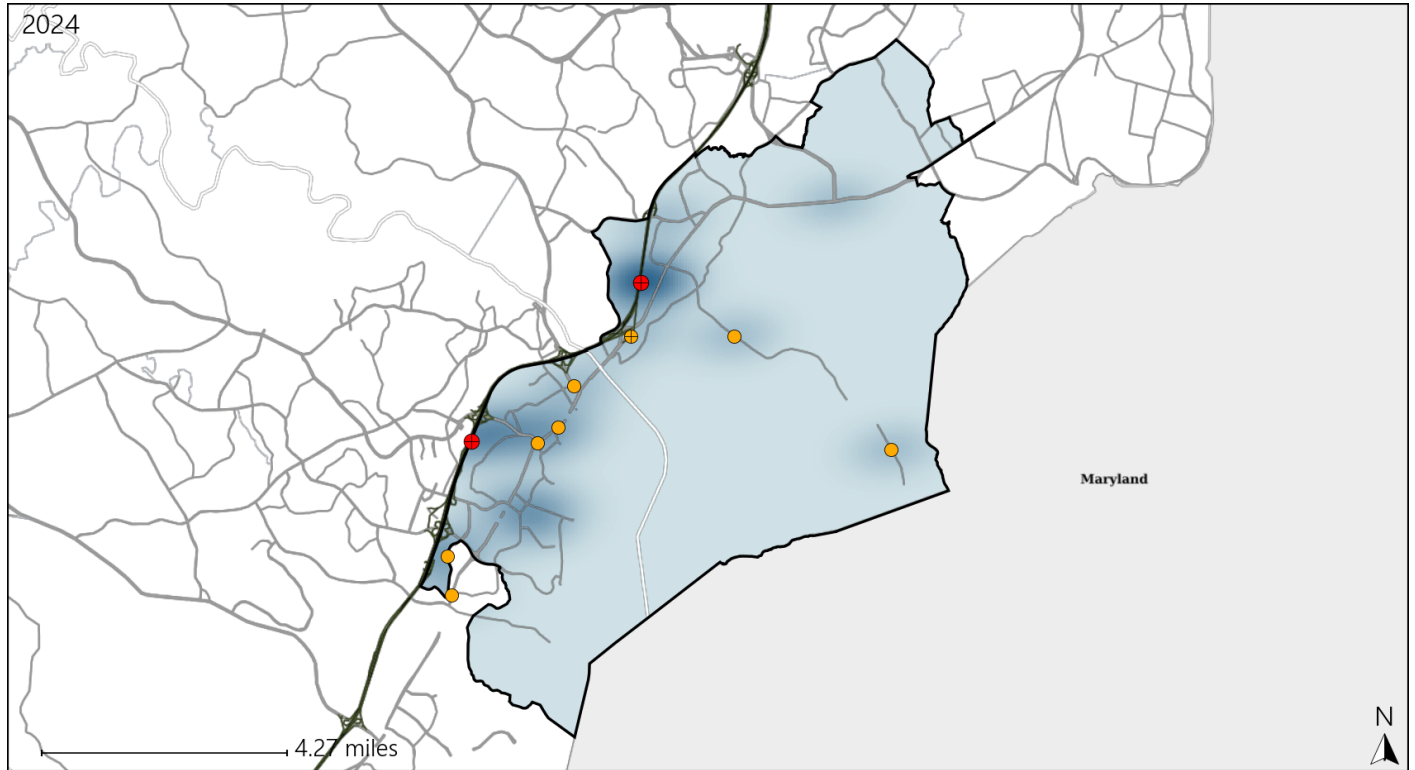


Available Crash Data - Calendar Year (CY)	CY 2021	CY 2022	CY 2023	CY 2024
Total Crashes	1196	1205	1299	1260
Fatal Crashes	5	8	6	7
Injury Crashes	361	342	398	390
Speed-Related Fatal Crashes	2	3	4	6
Percent of Speed-Related Fatal Crashes to Total Fatal Crashes	40%	38%	67%	86%
Speed-Related Injury Crashes	126	113	114	124
Percent of Speed-Related Injury Crashes to Total Injury Crashes	35%	33%	29%	32%

# Virginia House District 19 Unrestrained Crash Statistics

Report Generated March, 2025

	Count	Highest Time Period(s)	Highest Day(s)	Highest Month(s)
<b>Fatal Crashes</b>	<b>2</b>	<b>3:00pm - 5:59pm</b>	<b>Monday - Wednesday</b>	<b>December - January</b>
<b>Unrestrained Fatalities</b>	<b>2</b>	<b>Noon - 2:59pm</b> (100%)	<b>(100%)</b>	<b>(100%)</b>
<b>Serious Injury Crashes</b>	<b>8</b>	<b>6:00am - 8:59am</b> (38%)	<b>Sunday</b> (38%)	<b>March</b> (38%)



## House District 19 Unrestrained-Related Crashes

Interstate Crashes

- Fatal
- Serious Injury

Non-interstate Crashes

- Fatal
- Serious Injury

The blue gradient represents the density of all unrestrained-related crashes.

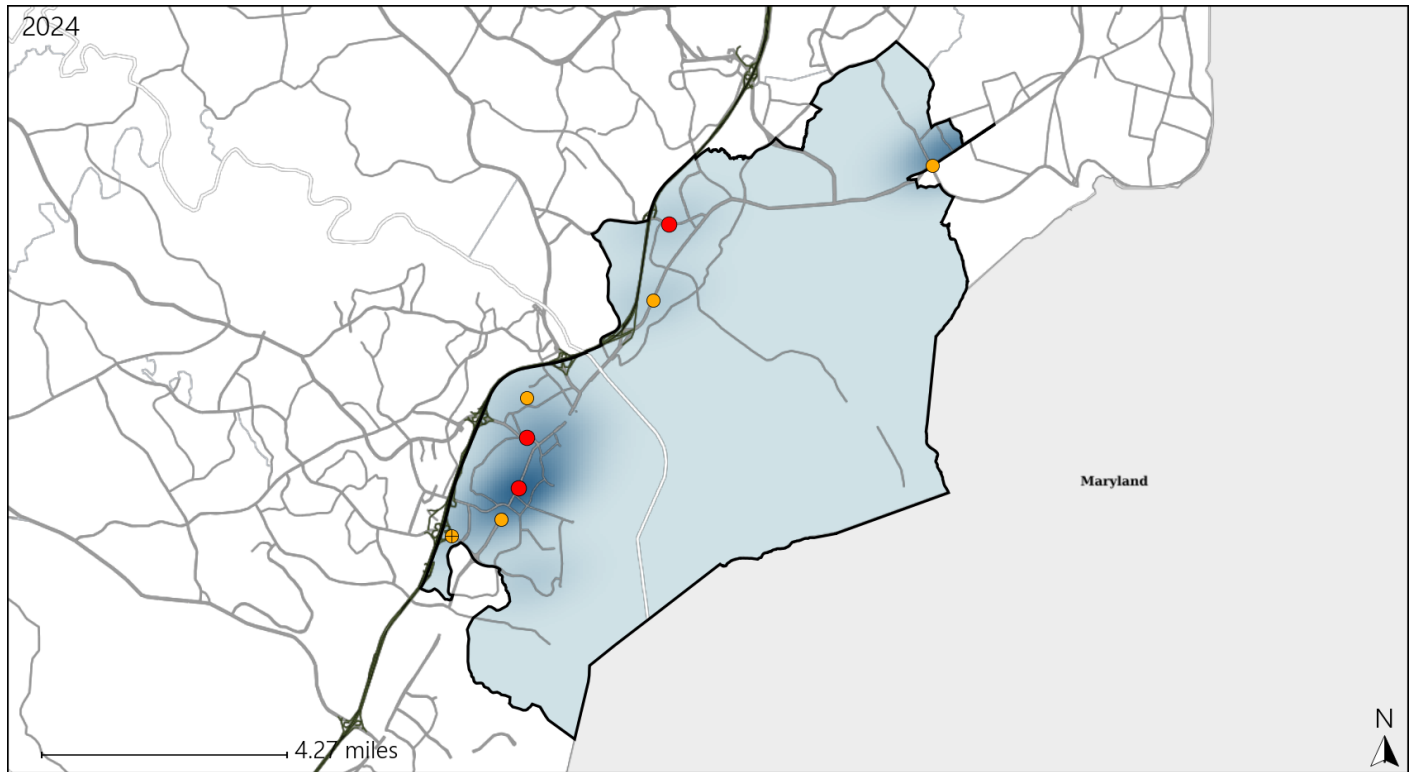


Available Crash Data - Calendar Year (CY)	CY 2021	CY 2022	CY 2023	CY 2024
Total Crashes	1196	1205	1299	1260
Fatalities	5	8	6	7
Injuries	645	550	640	654
Unrestrained Fatalities	0	2	1	2
Percent of Unrestrained Fatalities to Total Fatalities	0%	25%	17%	29%
Unrestrained Injuries	29	17	24	27
Percent of Unrestrained Injuries to Total Injuries	4%	3%	4%	4%

# Virginia House District 19 Pedestrian Crash Statistics

Report Generated March, 2025

	Count	Highest Time Period(s)	Highest Day(s)	Highest Month(s)
<b>Fatal Crashes</b>	<b>3</b>	<b>9:00pm - 11:59pm</b>	<b>Sunday</b>	<b>April • July</b>
<b>Pedestrian Fatalities</b>	<b>3</b>	(67%)	(67%)	(66%)
<b>Serious Injury Crashes</b>	<b>5</b>	<b>3:00pm - 5:59pm</b> <b>6:00am - 8:59am</b>	<b>Thursday</b>	<b>August • February</b>
		(40%)	(40%)	(40%)



### House District 19 Pedestrian-Related Crashes

- |                    |                        |
|--------------------|------------------------|
| Interstate Crashes | Non-interstate Crashes |
| ● Fatal            | ● Fatal                |
| ⊕ Serious Injury   | ● Serious Injury       |

The blue gradient represents the density of all pedestrian-related crashes.

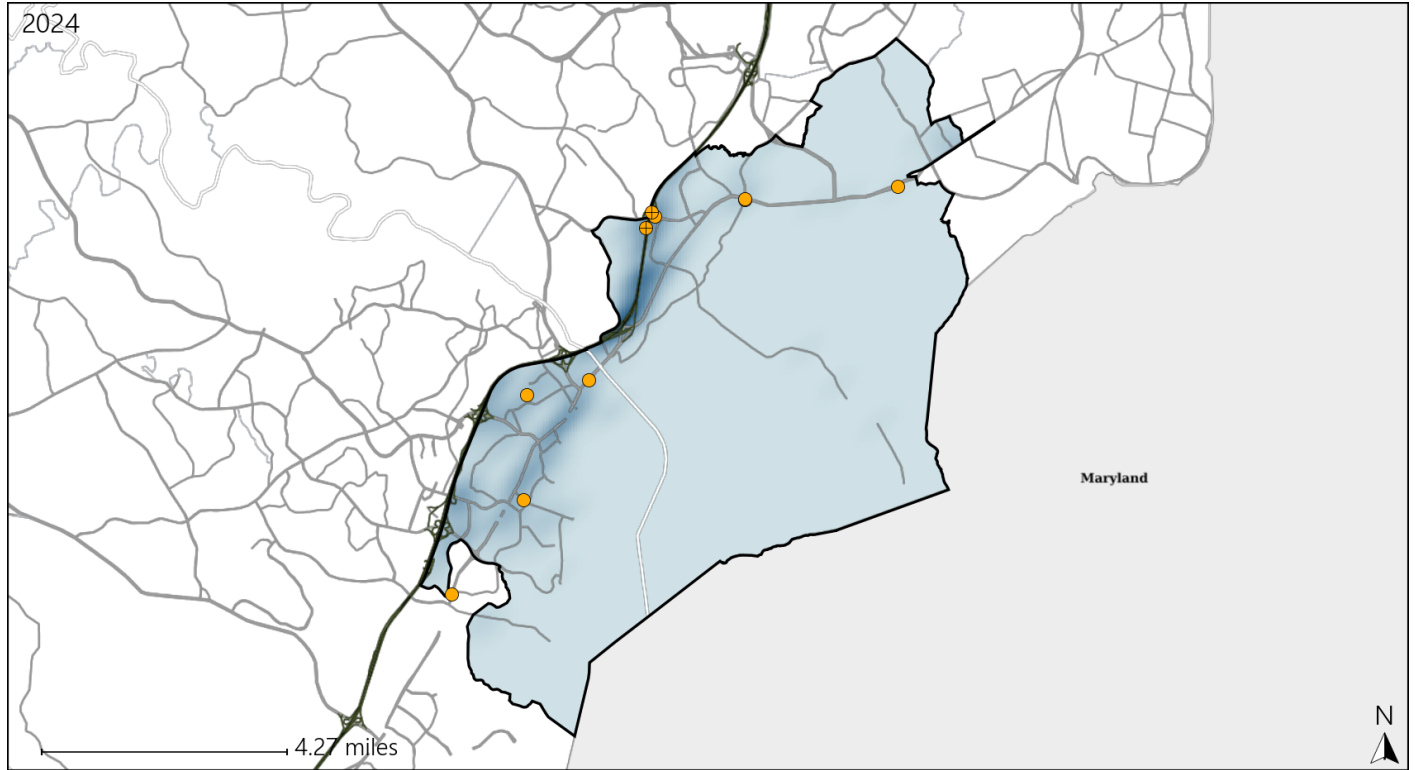


Available Crash Data - Calendar Year (CY)	CY 2021	CY 2022	CY 2023	CY 2024
Total Crashes	1196	1205	1299	1260
Fatal Crashes	5	8	6	7
Injury Crashes	361	342	398	390
Pedestrian-Related Fatal Crashes	3	3	2	3
Percent of Pedestrian-Related Fatal Crashes to Total Fatal Crashes	60%	38%	33%	43%
Pedestrian-Related Injury Crashes	13	24	24	16
Percent of Pedestrian-Related Injury Crashes to Total Injury Crashes	4%	7%	6%	4%

# Virginia House District 19 Distracted Driving Crash Statistics

Report Generated March, 2025

	Count	Highest Time Period(s)	Highest Day(s)	Highest Month(s)
<b>Fatal Crashes</b>	<b>0</b>	-	-	-
<b>Resulting Fatalities</b>	<b>0</b>	-	-	-
<b>Serious Injury Crashes</b>	<b>10</b>	<b>9:00pm - 11:59pm</b> (40%)	<b>Saturday - Thursday</b> (60%)	<b>November</b> (30%)



## House District 19 Distracted Driving-Related Crashes

- |                    |                        |
|--------------------|------------------------|
| Interstate Crashes | Non-interstate Crashes |
| Fatal              | Fatal                  |
| Serious Injury     | Serious Injury         |

The blue gradient represents the density of all distracted driving-related crashes.



Available Crash Data - Calendar Year (CY)	CY 2021	CY 2022	CY 2023	CY 2024
Total Crashes	1196	1205	1299	1260
Fatal Crashes	5	8	6	7
Injury Crashes	361	342	398	390
Distracted Driving-Related Fatal Crashes	0	0	1	0
Percent of Distracted Driving-Related Fatal Crashes to Total Fatal Crashes	0%	0%	17%	0%
Distracted Driving-Related Injury Crashes	98	55	76	76
Percent of Distracted Driving-Related Injury Crashes to Total Injury Crashes	27%	16%	19%	19%