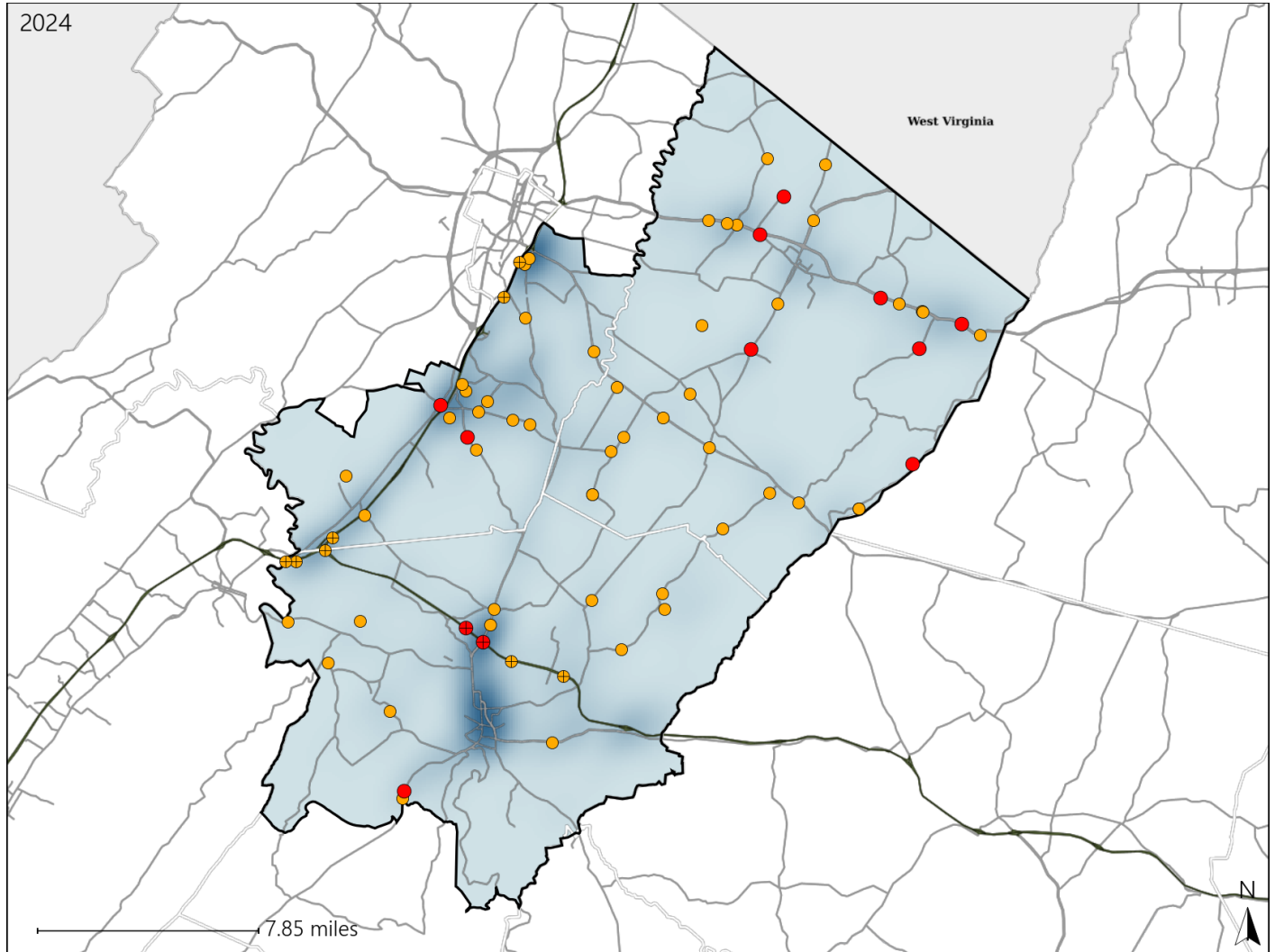


Virginia House District 31 Crash Statistics

Report Generated March, 2025

	Count	Highest Time Period(s)	Highest Day(s)	Highest Month(s)
Fatal Crashes	12	6:00pm - 8:59pm	Friday • Monday	May
Resulting Fatalities	13	Noon - 2:59pm (50%)	(66%)	(25%)
Serious Injury Crashes	61	6:00pm - 8:59pm (23%)	Tuesday (20%)	July (18%)



House District 31 Crashes

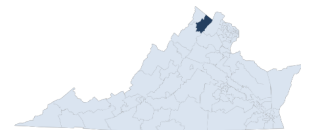
Interstate Crashes

- Fatal
- Serious Injury

Non-interstate Crashes

- Fatal
- Serious Injury

The blue gradient represents the density of all crashes.

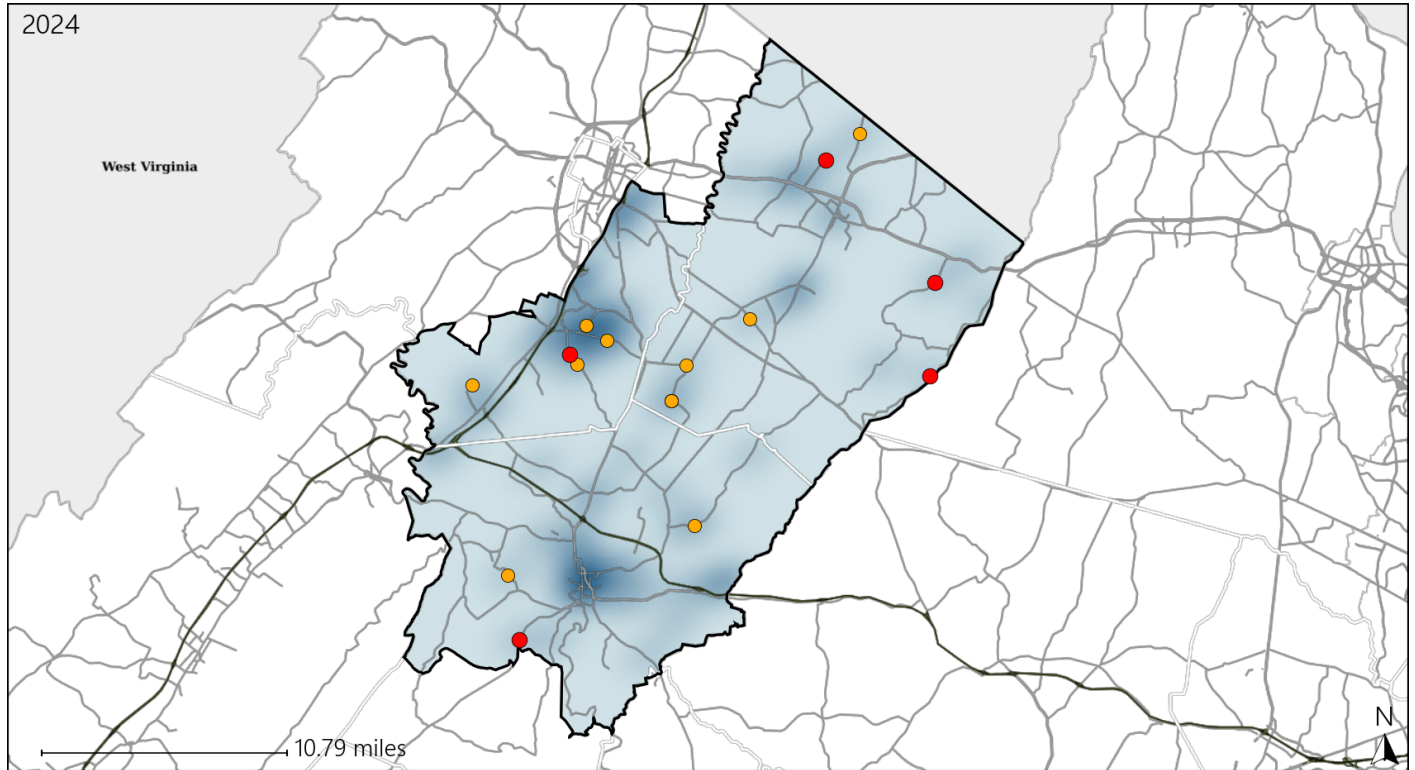


Available Crash Data - Calendar Year (CY)	CY 2021	CY 2022	CY 2023	CY 2024
Total Crashes	1106	1212	1344	1321
Fatal Crashes	6	12	10	12
Injury Crashes	358	297	362	372

Virginia House District 31 Alcohol Crash Statistics

Report Generated March, 2025

	Count	Highest Time Period(s)	Highest Day(s)	Highest Month(s)
Fatal Crashes	5	6:00pm - 8:59pm	Friday	December • July
Resulting Fatalities	5	9:00pm - 11:59pm (80%)	(60%)	(40%)
Serious Injury Crashes	11	9:00pm - 11:59pm (27%)	Friday (27%)	January • July (36%)



House District 31 Alcohol-Related Crashes

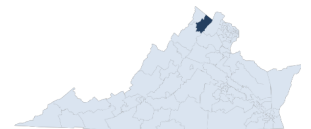
Interstate Crashes

Non-interstate Crashes

- Fatal
- Serious Injury

- Fatal
- Serious Injury

The blue gradient represents the density of all alcohol-related crashes.

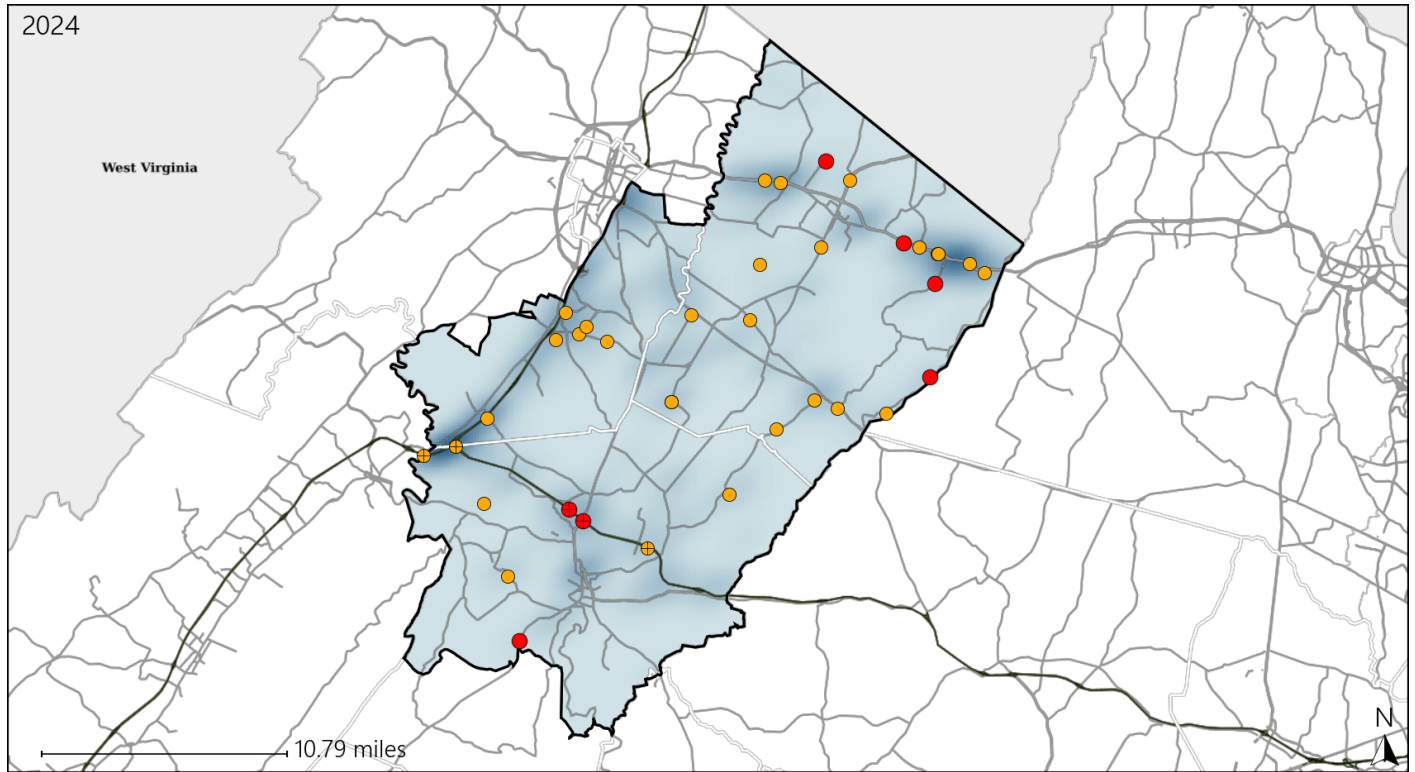


Available Crash Data - Calendar Year (CY)	CY 2021	CY 2022	CY 2023	CY 2024
Total Crashes	1106	1212	1344	1321
Fatal Crashes	6	12	10	12
Injury Crashes	358	297	362	372
Alcohol-Related Fatal Crashes	3	2	4	5
Percent of Alcohol-Related Fatal Crashes to Total Fatal Crashes	50%	17%	40%	42%
Alcohol-Related Injury Crashes	29	14	29	34
Percent of Alcohol-Related Injury Crashes to Total Injury Crashes	8%	5%	8%	9%

Virginia House District 31 Speed Crash Statistics

Report Generated March, 2025

	Count	Highest Time Period(s)	Highest Day(s)	Highest Month(s)
Fatal Crashes	7	6:00pm - 8:59pm	Monday	October
Resulting Fatalities	7	(43%)	(43%)	(29%)
Serious Injury Crashes	30	6:00pm - 8:59pm	Monday	December + July
		(27%)	(23%)	(26%)



House District 31 Speed-Related Crashes

Interstate Crashes Non-interstate Crashes
 ● Fatal ● Fatal
 ⊕ Serious Injury ⊕ Serious Injury
 The blue gradient represents the density of all speed-related crashes.

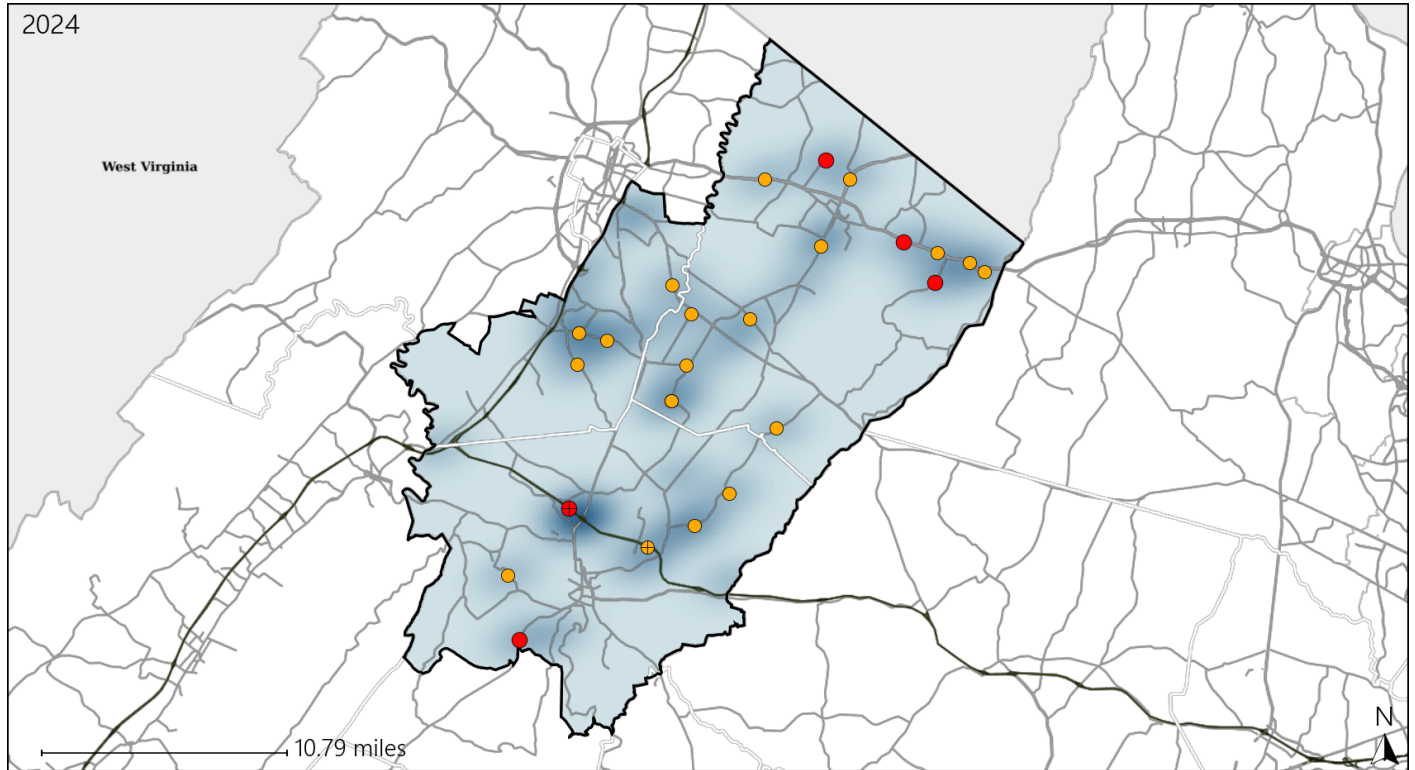


Available Crash Data - Calendar Year (CY)	CY 2021	CY 2022	CY 2023	CY 2024
Total Crashes	1106	1212	1344	1321
Fatal Crashes	6	12	10	12
Injury Crashes	358	297	362	372
Speed-Related Fatal Crashes	4	6	2	7
Percent of Speed-Related Fatal Crashes to Total Fatal Crashes	67%	50%	20%	58%
Speed-Related Injury Crashes	89	82	83	106
Percent of Speed-Related Injury Crashes to Total Injury Crashes	25%	28%	23%	28%

Virginia House District 31 Unrestrained Crash Statistics

Report Generated March, 2025

	Count	Highest Time Period(s)	Highest Day(s)	Highest Month(s)
Fatal Crashes	5	6:00pm - 8:59pm	Monday	June • May
Unrestrained Fatalities	5	9:00pm - 11:59pm (80%)	(40%)	(40%)
Serious Injury Crashes	20	3:00pm - 5:59pm (30%)	Sunday (30%)	December (25%)



House District 31 Unrestrained-Related Crashes

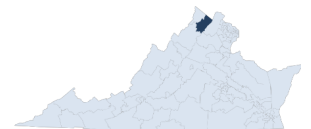
Interstate Crashes

Non-interstate Crashes

- Fatal
- Serious Injury

- Fatal
- Serious Injury

The blue gradient represents the density of all unrestrained-related crashes.

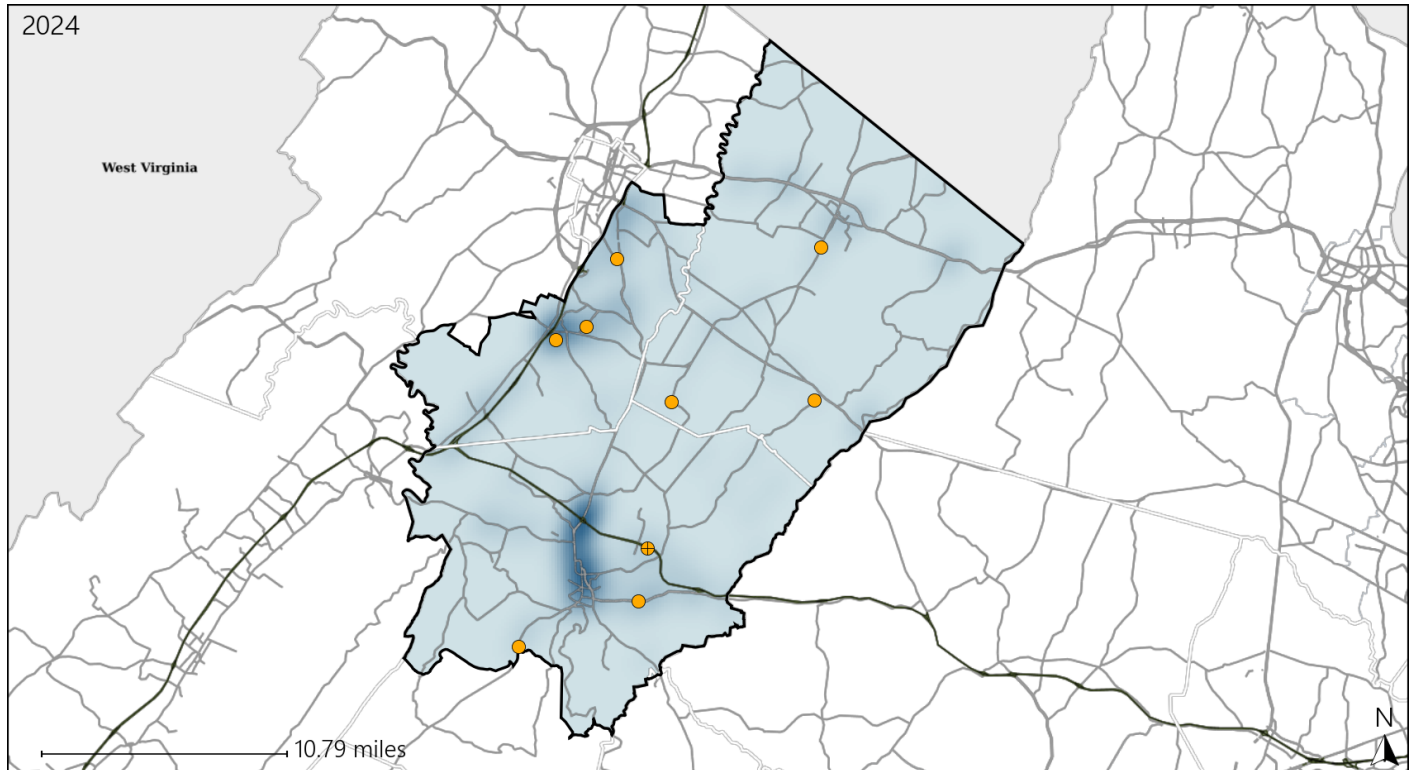


Available Crash Data - Calendar Year (CY)	CY 2021	CY 2022	CY 2023	CY 2024
Total Crashes	1106	1212	1344	1321
Fatalities	6	13	12	13
Injuries	510	423	543	537
Unrestrained Fatalities	3	3	3	5
Percent of Unrestrained Fatalities to Total Fatalities	50%	23%	25%	38%
Unrestrained Injuries	24	38	34	54
Percent of Unrestrained Injuries to Total Injuries	5%	9%	6%	10%

Virginia House District 31 Distracted Driving Crash Statistics

Report Generated March, 2025

	Count	Highest Time Period(s)	Highest Day(s)	Highest Month(s)
Fatal Crashes	0	-	-	-
Resulting Fatalities	0	-	-	-
Serious Injury Crashes	9	9:00pm - 11:59pm (44%)	Friday (33%)	April (33%)



House District 31 Distracted Driving-Related Crashes

- | | |
|--------------------|------------------------|
| Interstate Crashes | Non-interstate Crashes |
| ● Fatal | ● Fatal |
| ● Serious Injury | ● Serious Injury |

The blue gradient represents the density of all distracted driving-related crashes.



Available Crash Data - Calendar Year (CY)	CY 2021	CY 2022	CY 2023	CY 2024
Total Crashes	1106	1212	1344	1321
Fatal Crashes	6	12	10	12
Injury Crashes	358	297	362	372
Distracted Driving-Related Fatal Crashes	1	1	0	0
Percent of Distracted Driving-Related Fatal Crashes to Total Fatal Crashes	17%	8%	0%	0%
Distracted Driving-Related Injury Crashes	76	62	75	69
Percent of Distracted Driving-Related Injury Crashes to Total Injury Crashes	21%	21%	21%	19%