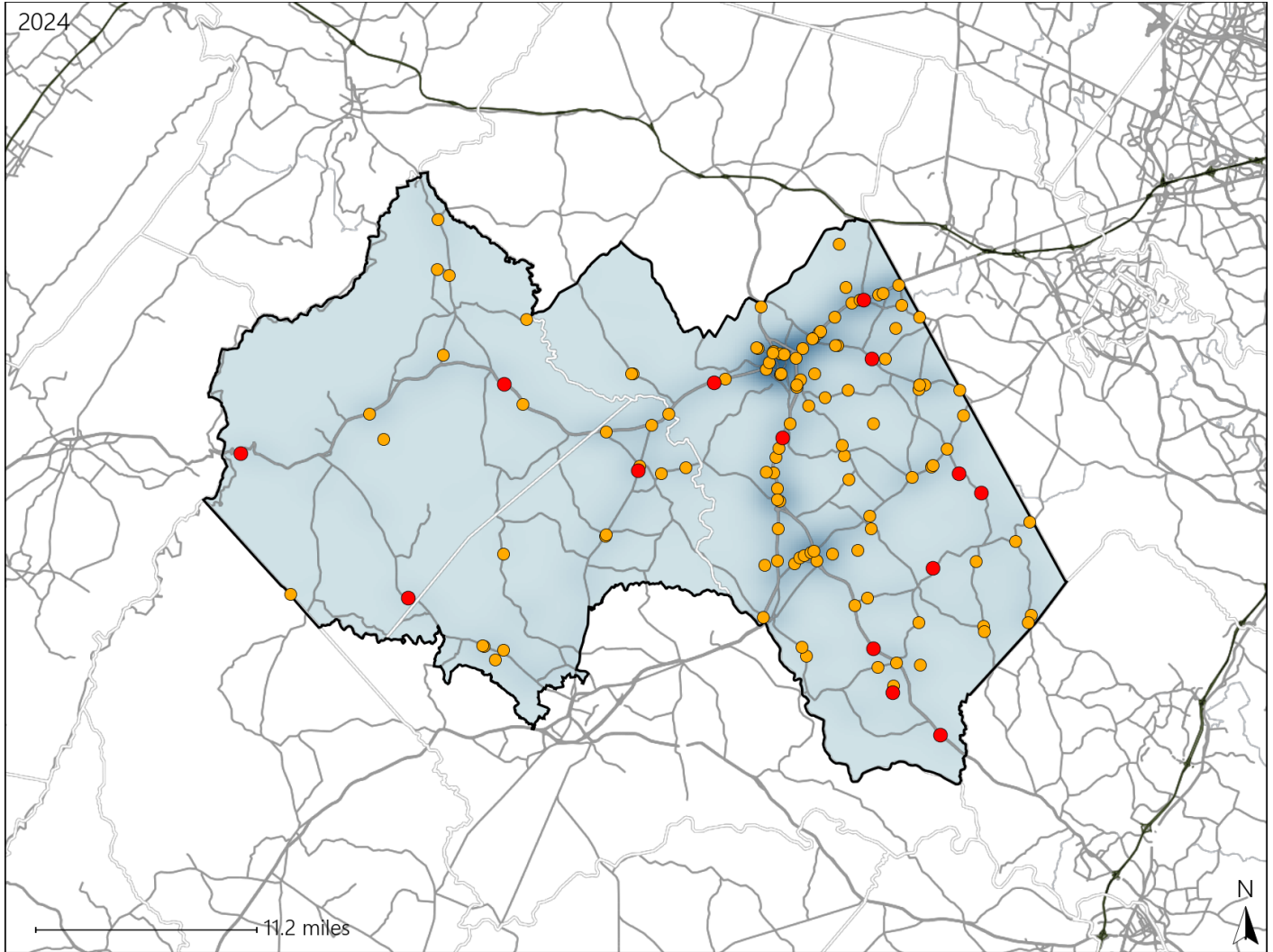


Virginia House District 61 Crash Statistics

Report Generated March, 2025

	Count	Highest Time Period(s)	Highest Day(s)	Highest Month(s)
Fatal Crashes	14	3:00pm - 5:59pm	Saturday	March • November
Resulting Fatalities	15	(36%)	(29%)	(42%)
Serious Injury Crashes	117	Noon - 2:59pm	Saturday	April • November
		(20%)	(19%)	(26%)



House District 61 Crashes

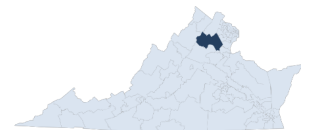
Interstate Crashes

- Fatal
- Serious Injury

Non-interstate Crashes

- Fatal
- Serious Injury

The blue gradient represents the density of all crashes.

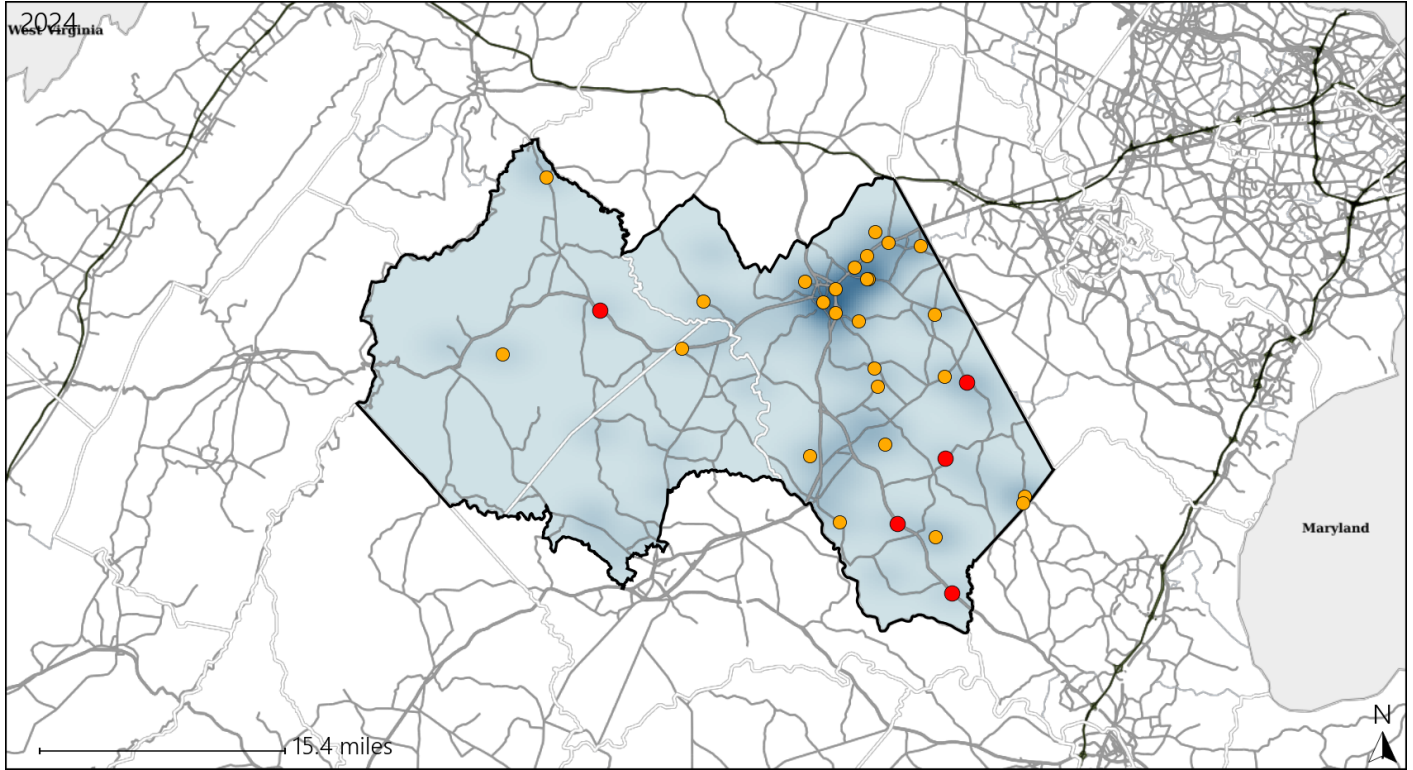


Available Crash Data - Calendar Year (CY)	CY 2021	CY 2022	CY 2023	CY 2024
Total Crashes	1377	1388	1397	1405
Fatal Crashes	10	11	12	14
Injury Crashes	445	448	494	527

Virginia House District 61 Alcohol Crash Statistics

Report Generated March, 2025

	Count	Highest Time Period(s)	Highest Day(s)	Highest Month(s)
Fatal Crashes	5	3:00pm - 5:59pm	Saturday	April • August
Resulting Fatalities	5	9:00pm - 11:59pm (80%)	(60%)	(40%)
Serious Injury Crashes	26	Midnight - 2:59am (35%)	Sunday (31%)	August • November (30%)



House District 61 Alcohol-Related Crashes

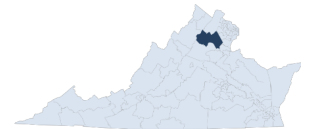
Interstate Crashes

- Fatal
- Serious Injury

Non-interstate Crashes

- Fatal
- Serious Injury

The blue gradient represents the density of all alcohol-related crashes.

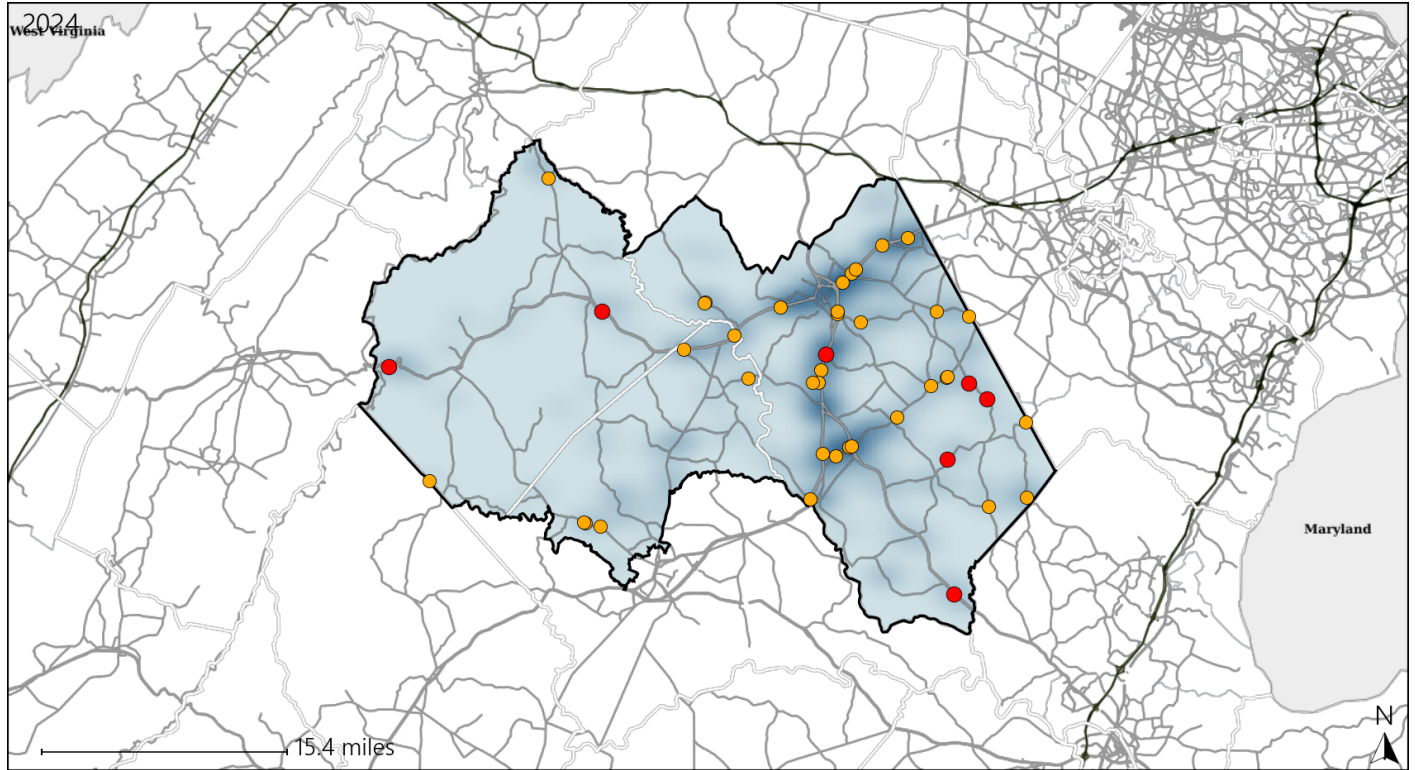


Available Crash Data - Calendar Year (CY)	CY 2021	CY 2022	CY 2023	CY 2024
Total Crashes	1377	1388	1397	1405
Fatal Crashes	10	11	12	14
Injury Crashes	445	448	494	527
Alcohol-Related Fatal Crashes	1	3	3	5
Percent of Alcohol-Related Fatal Crashes to Total Fatal Crashes	10%	27%	25%	36%
Alcohol-Related Injury Crashes	41	43	39	50
Percent of Alcohol-Related Injury Crashes to Total Injury Crashes	9%	10%	8%	9%

Virginia House District 61 Speed Crash Statistics

Report Generated March, 2025

	Count	Highest Time Period(s)	Highest Day(s)	Highest Month(s)
Fatal Crashes	7	3:00pm - 5:59pm	Friday	April • November
Resulting Fatalities	8	(57%)	(43%)	(58%)
Serious Injury Crashes	36	Noon - 2:59pm	Monday	May
		(25%)	(22%)	(17%)




House District 61 Speed-Related Crashes


Interstate Crashes

Non-interstate Crashes

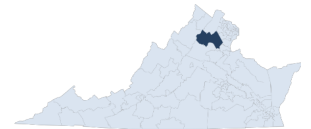
 Fatal

 Fatal

 Serious Injury

 Serious Injury

The blue gradient represents the density of all speed-related crashes.

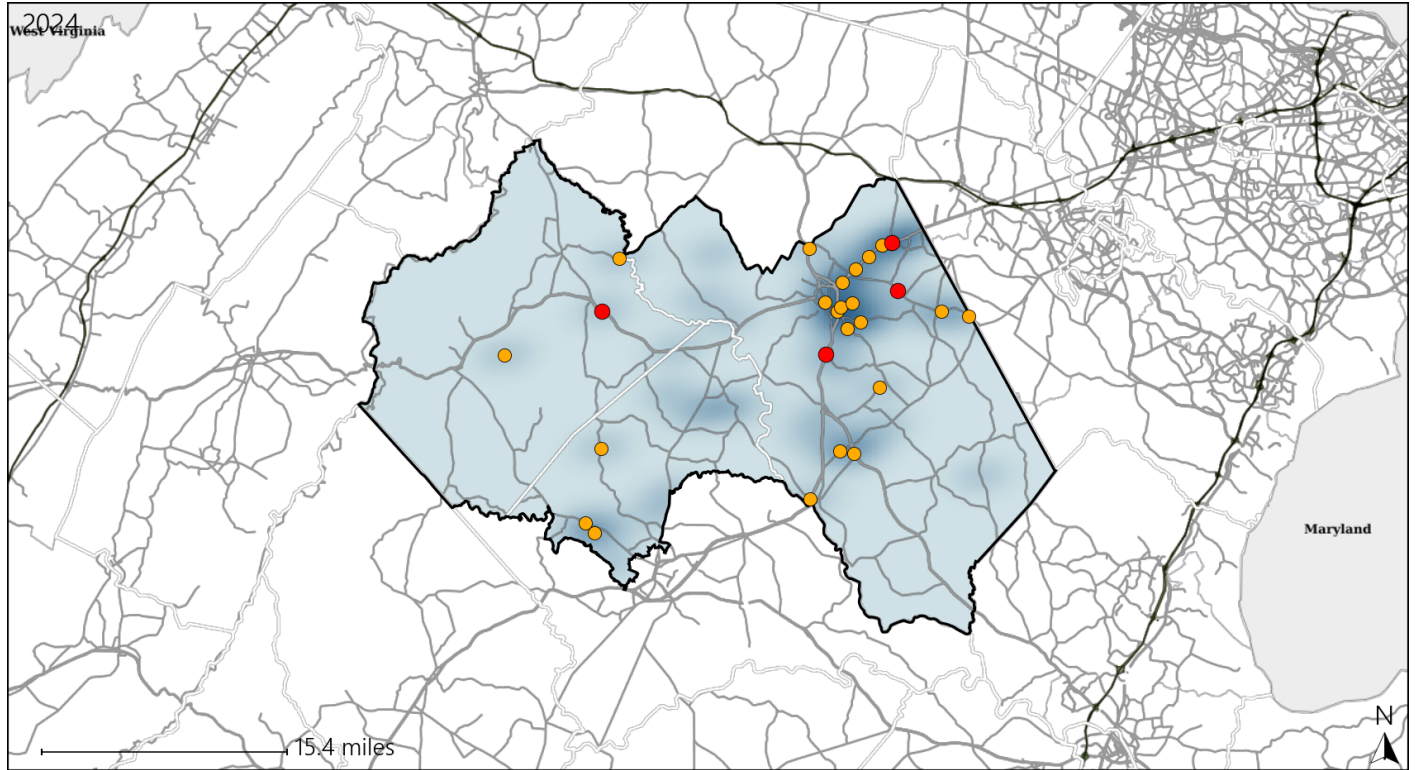


Available Crash Data - Calendar Year (CY)	CY 2021	CY 2022	CY 2023	CY 2024
Total Crashes	1377	1388	1397	1405
Fatal Crashes	10	11	12	14
Injury Crashes	445	448	494	527
Speed-Related Fatal Crashes	5	7	7	7
Percent of Speed-Related Fatal Crashes to Total Fatal Crashes	50%	64%	58%	50%
Speed-Related Injury Crashes	110	116	120	128
Percent of Speed-Related Injury Crashes to Total Injury Crashes	25%	26%	24%	24%

Virginia House District 61 Unrestrained Crash Statistics

Report Generated March, 2025

	Count	Highest Time Period(s)	Highest Day(s)	Highest Month(s)
Fatal Crashes	4	3:00pm - 5:59pm	Monday • Saturday	April
Unrestrained Fatalities	4	(50%)	(50%)	(50%)
Serious Injury Crashes	23	6:00am - 8:59am	Monday	April
		(26%)	(26%)	(30%)



House District 61 Unrestrained-Related Crashes

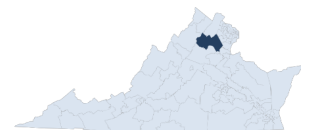
Interstate Crashes

Non-interstate Crashes

- Fatal
- Serious Injury

- Fatal
- Serious Injury

The blue gradient represents the density of all unrestrained-related crashes.

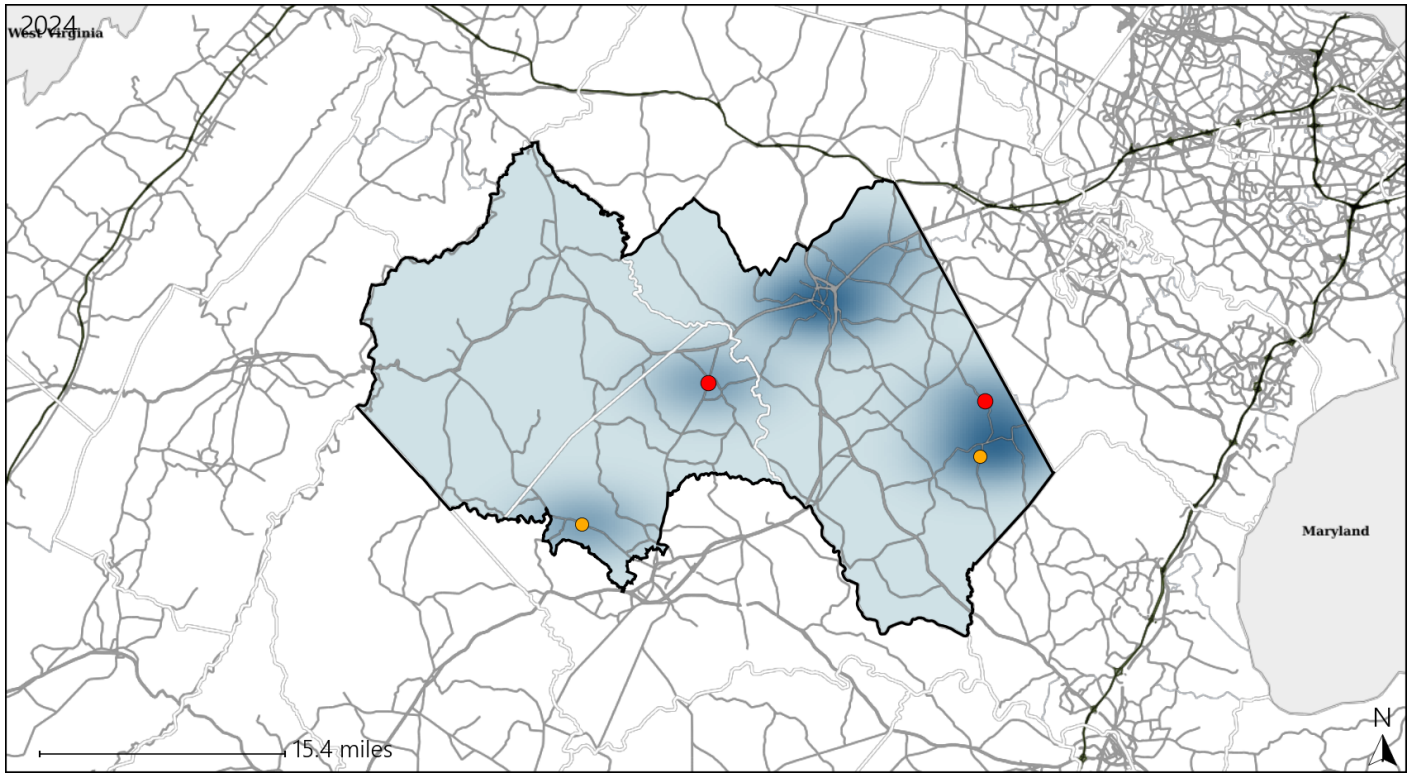


Available Crash Data - Calendar Year (CY)	CY 2021	CY 2022	CY 2023	CY 2024
Total Crashes	1377	1388	1397	1405
Fatalities	10	13	12	15
Injuries	644	603	672	787
Unrestrained Fatalities	5	3	3	4
Percent of Unrestrained Fatalities to Total Fatalities	50%	23%	25%	27%
Unrestrained Injuries	44	51	58	55
Percent of Unrestrained Injuries to Total Injuries	7%	8%	9%	7%

Virginia House District 61 Pedestrian Crash Statistics

Report Generated March, 2025

	Count	Highest Time Period(s)	Highest Day(s)	Highest Month(s)
Fatal Crashes	2	3:00pm - 5:59pm	Friday • Wednesday	March • November
Pedestrian Fatalities	2	9:00am - 11:59am (100%)	(100%)	(100%)
Serious Injury Crashes	2	6:00pm - 8:59pm Noon - 2:59pm (100%)	Saturday • Sunday (100%)	February • May (100%)



House District 61 Pedestrian-Related Crashes

Interstate Crashes Non-interstate Crashes
 ● Fatal ● Fatal
 ⊕ Serious Injury ⊕ Serious Injury

The blue gradient represents the density of all pedestrian-related crashes.

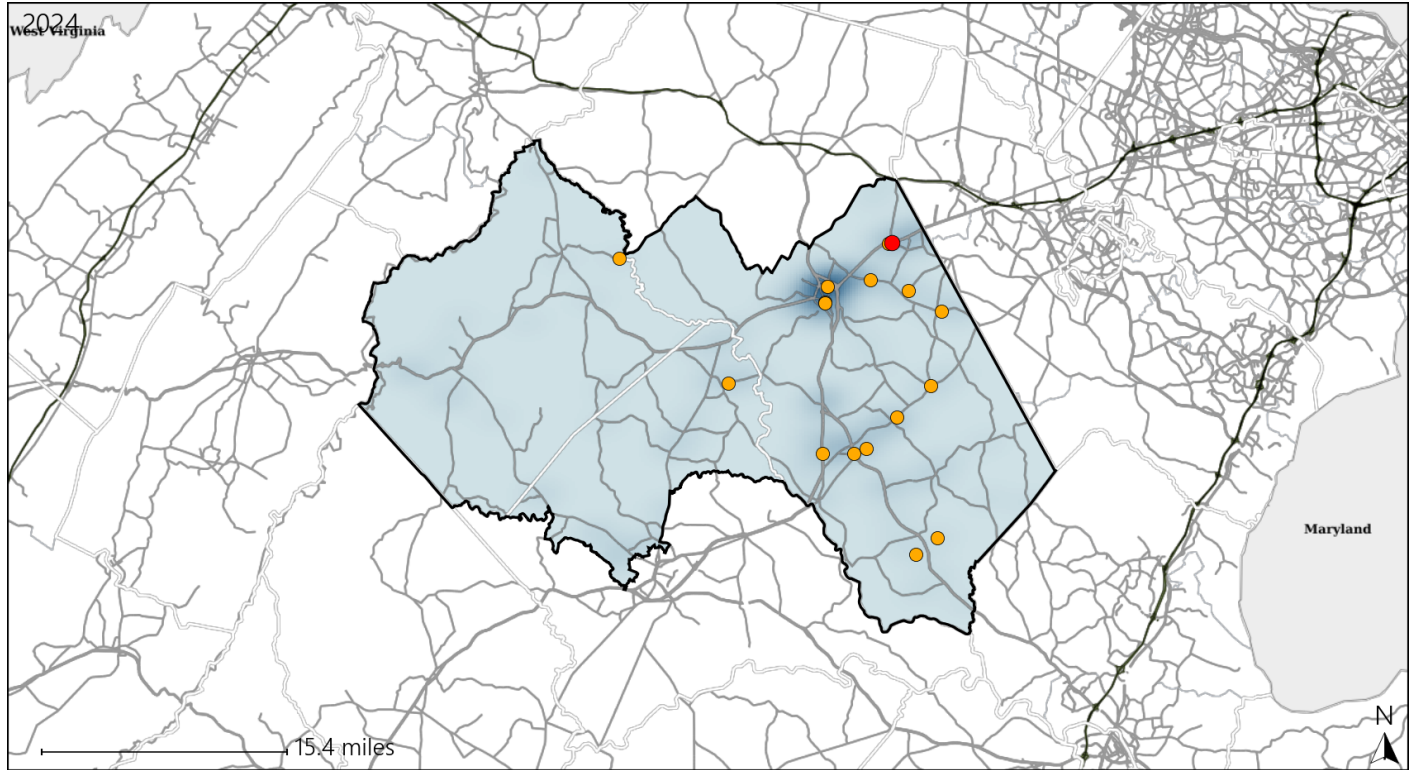


Available Crash Data - Calendar Year (CY)	CY 2021	CY 2022	CY 2023	CY 2024
Total Crashes	1377	1388	1397	1405
Fatal Crashes	10	11	12	14
Injury Crashes	445	448	494	527
Pedestrian-Related Fatal Crashes	1	0	1	2
Percent of Pedestrian-Related Fatal Crashes to Total Fatal Crashes	10%	0%	8%	14%
Pedestrian-Related Injury Crashes	6	4	12	6
Percent of Pedestrian-Related Injury Crashes to Total Injury Crashes	1%	1%	2%	1%

Virginia House District 61 Distracted Driving Crash Statistics

Report Generated March, 2025

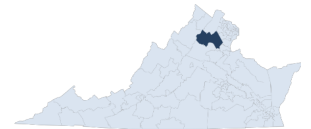
	Count	Highest Time Period(s)	Highest Day(s)	Highest Month(s)
Fatal Crashes	1	3:00pm - 5:59pm	Sunday	May
Resulting Fatalities	1	(100%)	(100%)	(100%)
Serious Injury Crashes	18	Noon - 2:59pm	Friday • Monday	December • July
		(33%)	(44%)	(34%)



House District 61 Distracted Driving-Related Crashes

- | | |
|--|--|
| Interstate Crashes | Non-interstate Crashes |
| ● Fatal | ● Fatal |
| ● Serious Injury | ● Serious Injury |

The blue gradient represents the density of all distracted driving-related crashes.



Available Crash Data - Calendar Year (CY)	CY 2021	CY 2022	CY 2023	CY 2024
Total Crashes	1377	1388	1397	1405
Fatal Crashes	10	11	12	14
Injury Crashes	445	448	494	527
Distracted Driving-Related Fatal Crashes	1	1	0	1
Percent of Distracted Driving-Related Fatal Crashes to Total Fatal Crashes	10%	9%	0%	7%
Distracted Driving-Related Injury Crashes	81	85	80	74
Percent of Distracted Driving-Related Injury Crashes to Total Injury Crashes	18%	19%	16%	14%