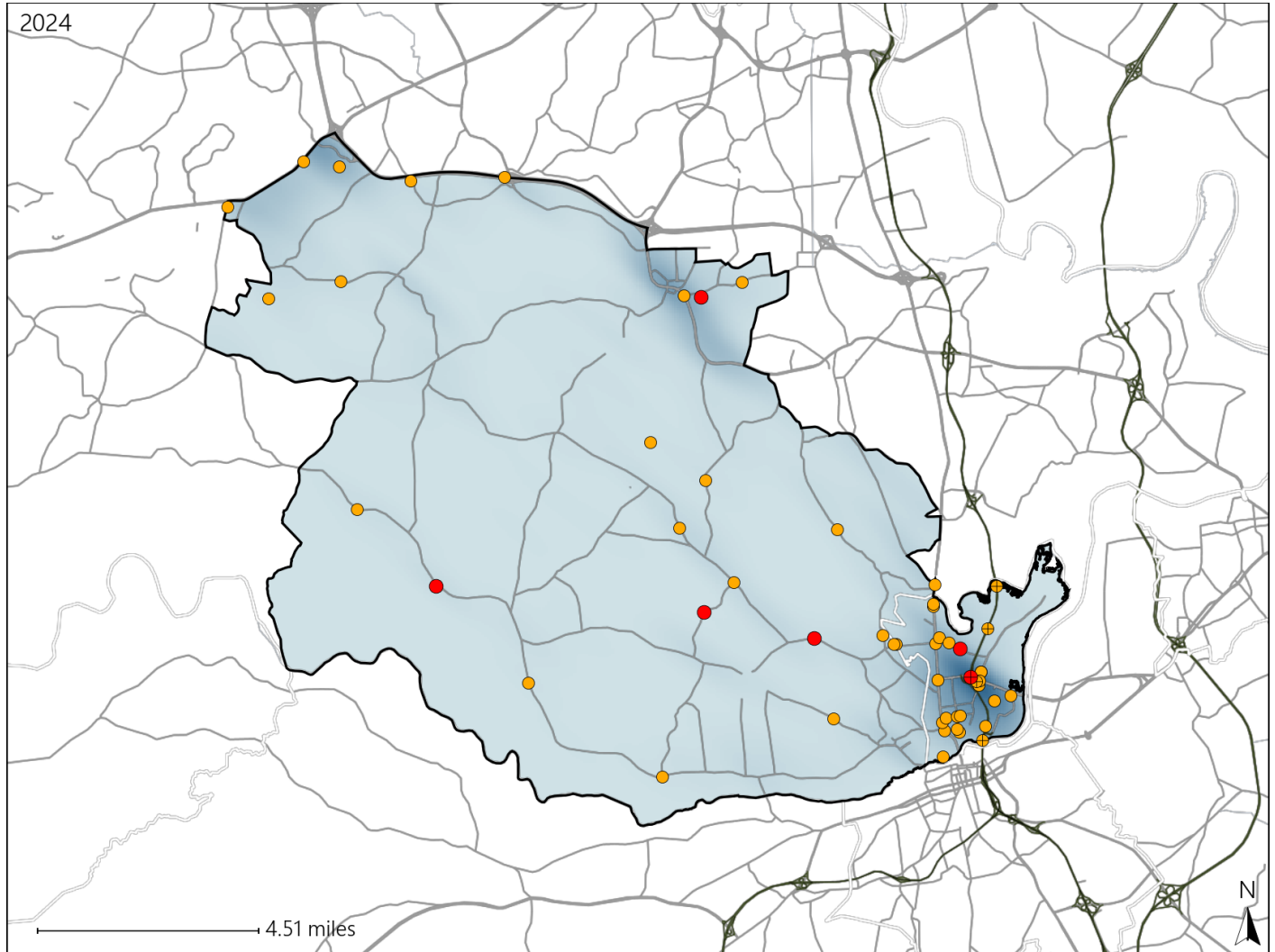


# Virginia House District 74 Crash Statistics

Report Generated March, 2025

	Count	Highest Time Period(s)	Highest Day(s)	Highest Month(s)
<b>Fatal Crashes</b>	<b>6</b>	<b>6:00pm - 8:59pm</b>	<b>Friday - Sunday</b>	<b>March - October</b>
<b>Resulting Fatalities</b>	<b>7</b>	<b>Noon - 2:59pm</b> (66%)	<b>(66%)</b>	<b>(66%)</b>
<b>Serious Injury Crashes</b>	<b>47</b>	<b>3:00pm - 5:59pm</b> (28%)	<b>Friday</b> (26%)	<b>April</b> (17%)



### House District 74 Crashes

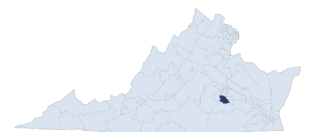
Interstate Crashes

- Fatal
- Serious Injury

Non-interstate Crashes

- Fatal
- Serious Injury

The blue gradient represents the density of all crashes.

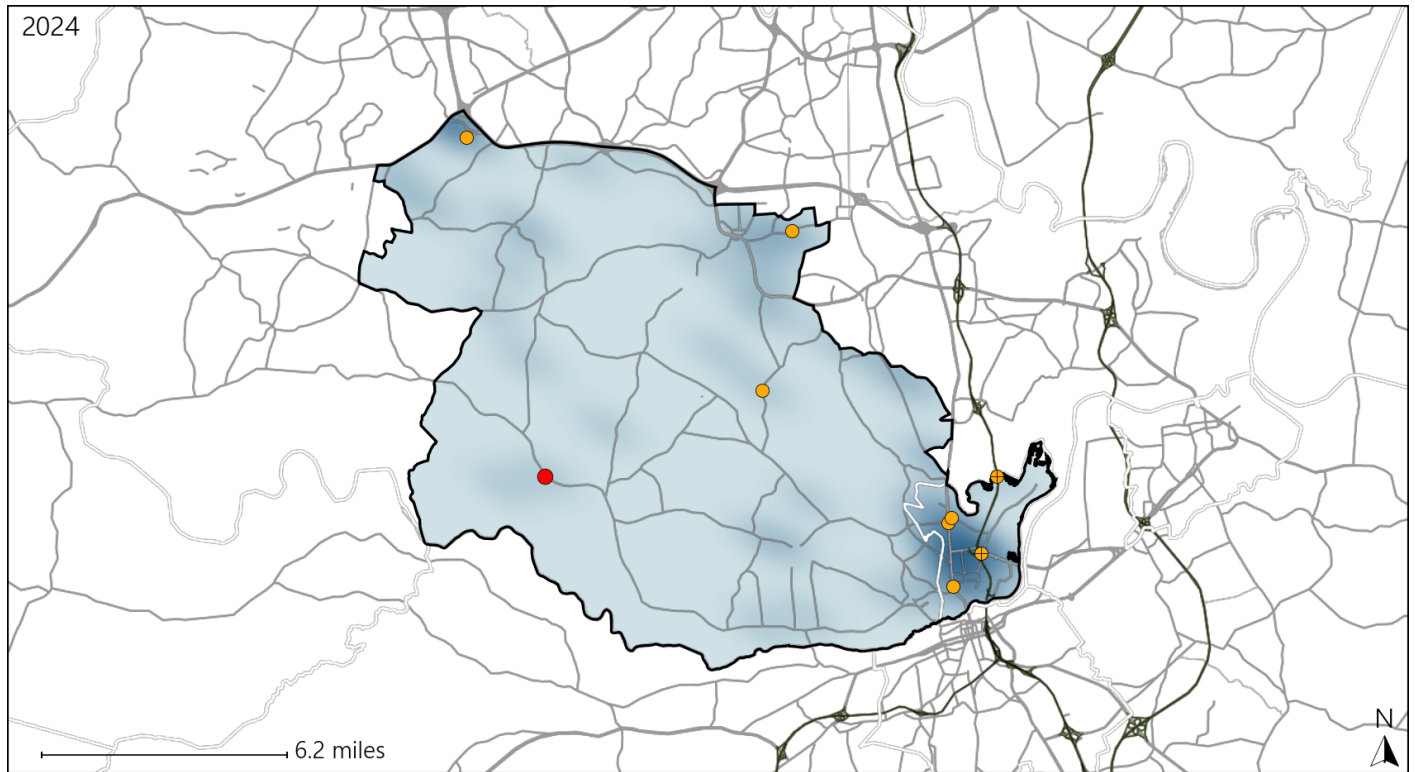


Available Crash Data - Calendar Year (CY)	CY 2021	CY 2022	CY 2023	CY 2024
Total Crashes	1115	1242	1303	1337
Fatal Crashes	5	9	3	6
Injury Crashes	343	367	350	383

# Virginia House District 74 Alcohol Crash Statistics

Report Generated March, 2025

	Count	Highest Time Period(s)	Highest Day(s)	Highest Month(s)
<b>Fatal Crashes</b>	<b>1</b>	<b>6:00pm - 8:59pm</b>	<b>Friday</b>	<b>October</b>
<b>Resulting Fatalities</b>	<b>1</b>	(100%)	(100%)	(100%)
<b>Serious Injury Crashes</b>	<b>8</b>	<b>9:00pm - 11:59pm</b> <b>Midnight - 2:59am</b>	<b>Friday</b>	<b>April</b>
		(50%)	(38%)	(25%)



### House District 74 Alcohol-Related Crashes

Interstate Crashes                      Non-interstate Crashes  
 ● Fatal                                      ● Fatal  
 ⊕ Serious Injury                          ⊕ Serious Injury

The blue gradient represents the density of all alcohol-related crashes.

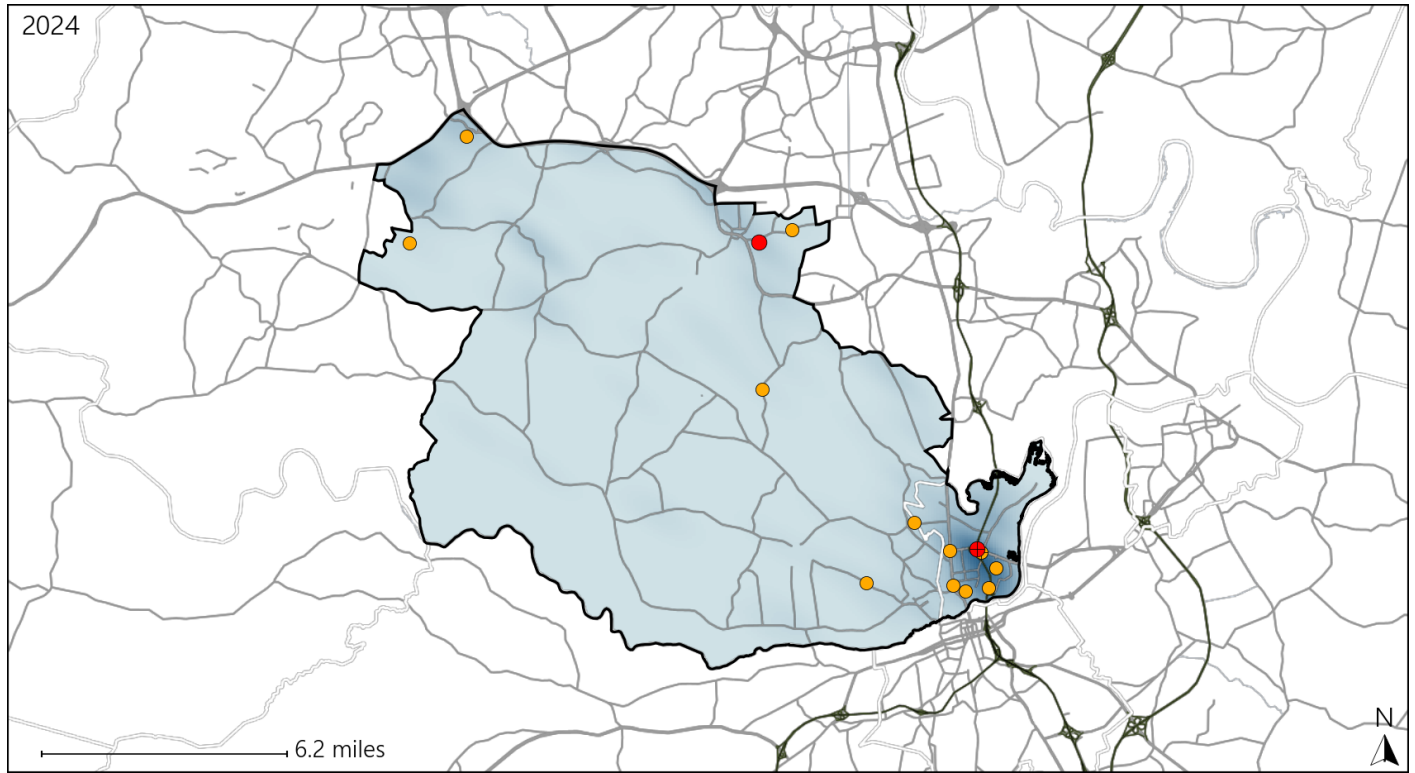


Available Crash Data - Calendar Year (CY)	CY 2021	CY 2022	CY 2023	CY 2024
Total Crashes	1115	1242	1303	1337
Fatal Crashes	5	9	3	6
Injury Crashes	343	367	350	383
Alcohol-Related Fatal Crashes	0	2	0	1
Percent of Alcohol-Related Fatal Crashes to Total Fatal Crashes	0%	22%	0%	17%
Alcohol-Related Injury Crashes	32	22	22	22
Percent of Alcohol-Related Injury Crashes to Total Injury Crashes	9%	6%	6%	6%

# Virginia House District 74 Speed Crash Statistics

Report Generated March, 2025

	Count	Highest Time Period(s)	Highest Day(s)	Highest Month(s)
<b>Fatal Crashes</b>	<b>2</b>	<b>9:00pm - 11:59pm</b>	<b>Friday • Tuesday</b>	<b>February • March</b>
<b>Resulting Fatalities</b>	<b>3</b>	<b>Midnight - 2:59am</b> (100%)	<b>(100%)</b>	<b>(100%)</b>
<b>Serious Injury Crashes</b>	<b>12</b>	<b>3:00am - 5:59am</b> <b>3:00pm - 5:59pm</b> (34%)	<b>Friday</b> (33%)	<b>September</b> (25%)



### House District 74 Speed-Related Crashes

Interstate Crashes                      Non-interstate Crashes  
 ● Fatal                                      ● Fatal  
 ⊕ Serious Injury                          ⊕ Serious Injury

The blue gradient represents the density of all speed-related crashes.

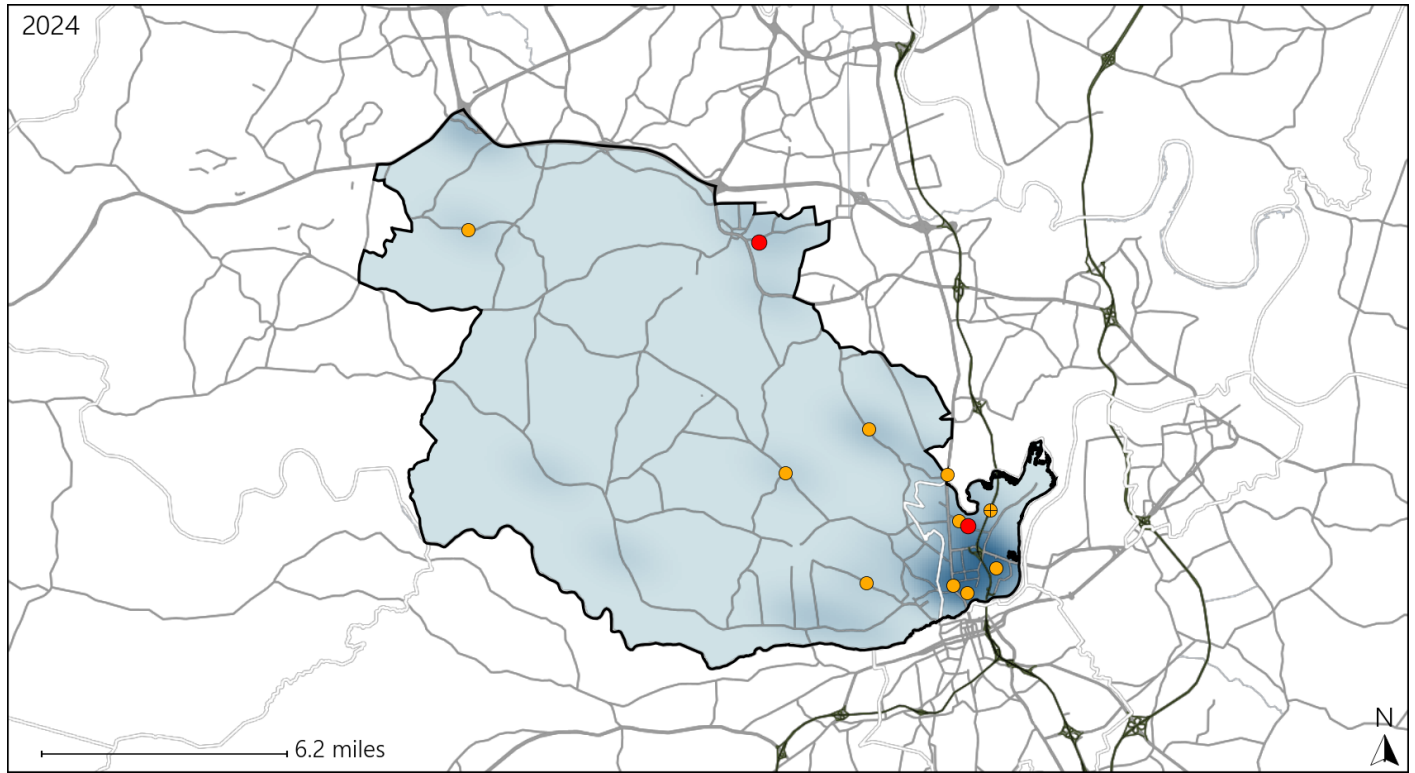


Available Crash Data - Calendar Year (CY)	CY 2021	CY 2022	CY 2023	CY 2024
Total Crashes	1115	1242	1303	1337
Fatal Crashes	5	9	3	6
Injury Crashes	343	367	350	383
Speed-Related Fatal Crashes	1	5	2	2
Percent of Speed-Related Fatal Crashes to Total Fatal Crashes	20%	56%	67%	33%
Speed-Related Injury Crashes	54	69	67	69
Percent of Speed-Related Injury Crashes to Total Injury Crashes	16%	19%	19%	18%

# Virginia House District 74 Unrestrained Crash Statistics

Report Generated March, 2025

	Count	Highest Time Period(s)	Highest Day(s)	Highest Month(s)
<b>Fatal Crashes</b>	<b>2</b>	Midnight - 2:59am	Friday • Sunday	March • October
<b>Unrestrained Fatalities</b>	<b>2</b>	Noon - 2:59pm (100%)	(100%)	(100%)
<b>Serious Injury Crashes</b>	<b>10</b>	3:00pm - 5:59pm 9:00am - 11:59am (60%)	Friday • Wednesday (60%)	January • November (40%)



### House District 74 Unrestrained-Related Crashes

- |                    |                        |
|--------------------|------------------------|
| Interstate Crashes | Non-interstate Crashes |
| ● Fatal            | ● Fatal                |
| ⊕ Serious Injury   | ● Serious Injury       |

The blue gradient represents the density of all unrestrained-related crashes.

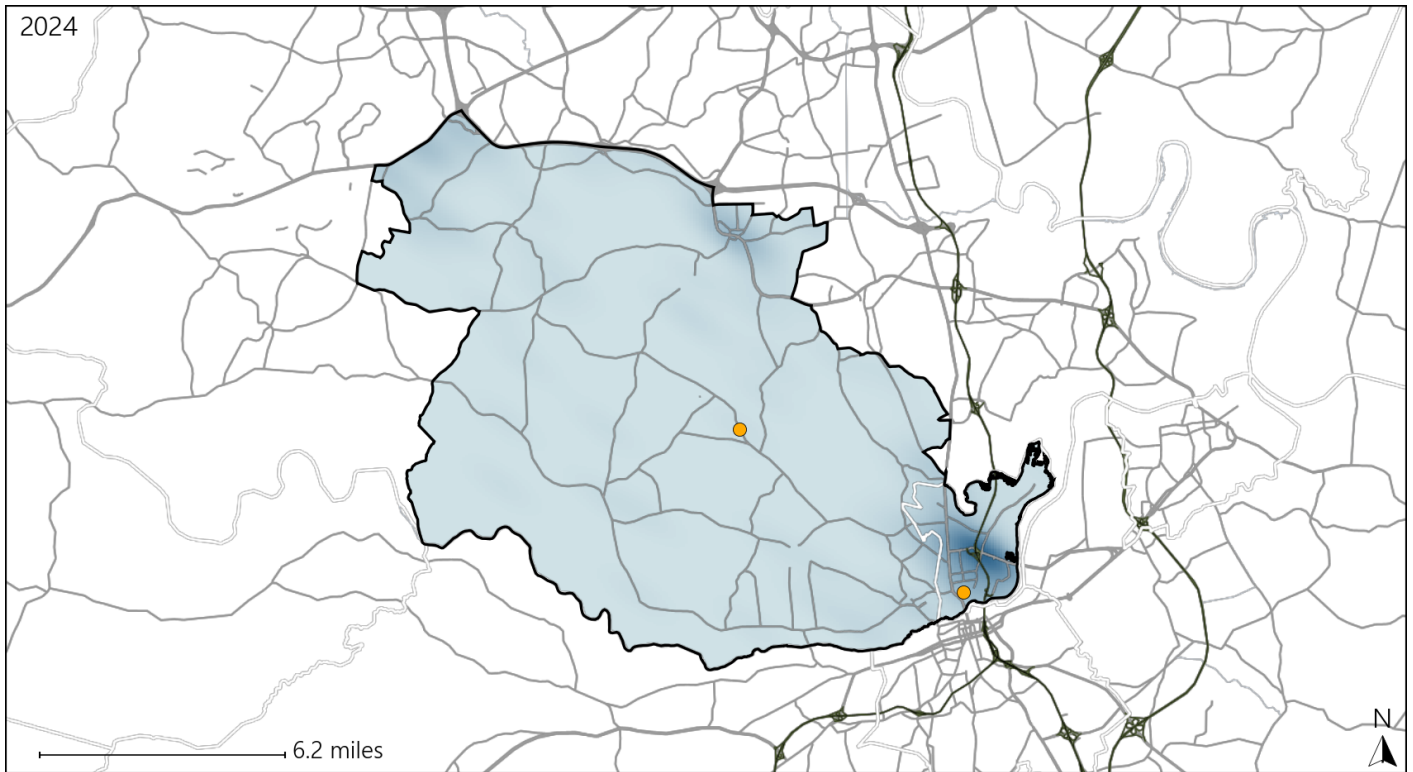


Available Crash Data - Calendar Year (CY)	CY 2021	CY 2022	CY 2023	CY 2024
Total Crashes	1115	1242	1303	1337
Fatalities	5	9	3	7
Injuries	526	613	532	620
Unrestrained Fatalities	2	1	1	2
Percent of Unrestrained Fatalities to Total Fatalities	40%	11%	33%	29%
Unrestrained Injuries	29	35	37	49
Percent of Unrestrained Injuries to Total Injuries	6%	6%	7%	8%

# Virginia House District 74 Distracted Driving Crash Statistics

Report Generated March, 2025

	Count	Highest Time Period(s)	Highest Day(s)	Highest Month(s)
<b>Fatal Crashes</b>	0	-	-	-
<b>Resulting Fatalities</b>	0	-	-	-
<b>Serious Injury Crashes</b>	2	9:00am - 11:59am Noon - 2:59pm (100%)	Monday • Wednesday (100%)	April • September (100%)



## House District 74 Distracted Driving-Related Crashes

- |                    |                        |
|--------------------|------------------------|
| Interstate Crashes | Non-interstate Crashes |
| ● Fatal            | ● Fatal                |
| ⊕ Serious Injury   | ● Serious Injury       |

The blue gradient represents the density of all distracted driving-related crashes.



Available Crash Data - Calendar Year (CY)	CY 2021	CY 2022	CY 2023	CY 2024
Total Crashes	1115	1242	1303	1337
Fatal Crashes	5	9	3	6
Injury Crashes	343	367	350	383
Distracted Driving-Related Fatal Crashes	0	1	0	0
Percent of Distracted Driving-Related Fatal Crashes to Total Fatal Crashes	0%	11%	0%	0%
Distracted Driving-Related Injury Crashes	72	74	59	45
Percent of Distracted Driving-Related Injury Crashes to Total Injury Crashes	21%	20%	17%	12%