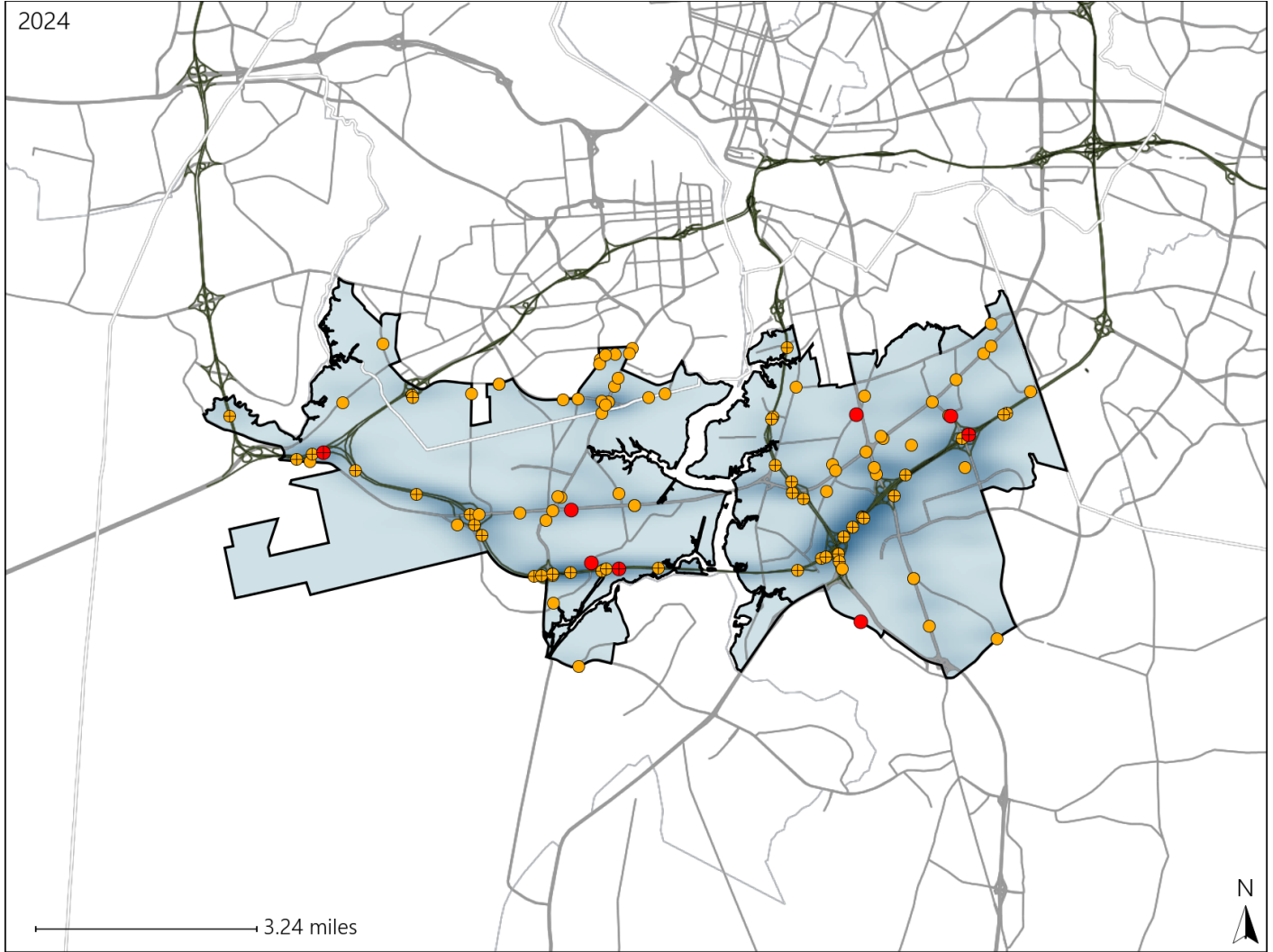


# Virginia House District 91 Crash Statistics

Report Generated March, 2025

	Count	Highest Time Period(s)	Highest Day(s)	Highest Month(s)
<b>Fatal Crashes</b>	<b>8</b>	<b>6:00pm - 8:59pm</b>	<b>Saturday • Sunday</b>	<b>August • December</b>
<b>Resulting Fatalities</b>	<b>8</b>	<b>9:00pm - 11:59pm</b> (50%)	<b>(50%)</b>	<b>(24%)</b>
<b>Serious Injury Crashes</b>	<b>99</b>	<b>3:00pm - 5:59pm</b> (22%)	<b>Friday</b> (20%)	<b>June</b> (12%)



## House District 91 Crashes

Interstate Crashes

- Fatal
- Serious Injury

Non-interstate Crashes

- Fatal
- Serious Injury

The blue gradient represents the density of all crashes.

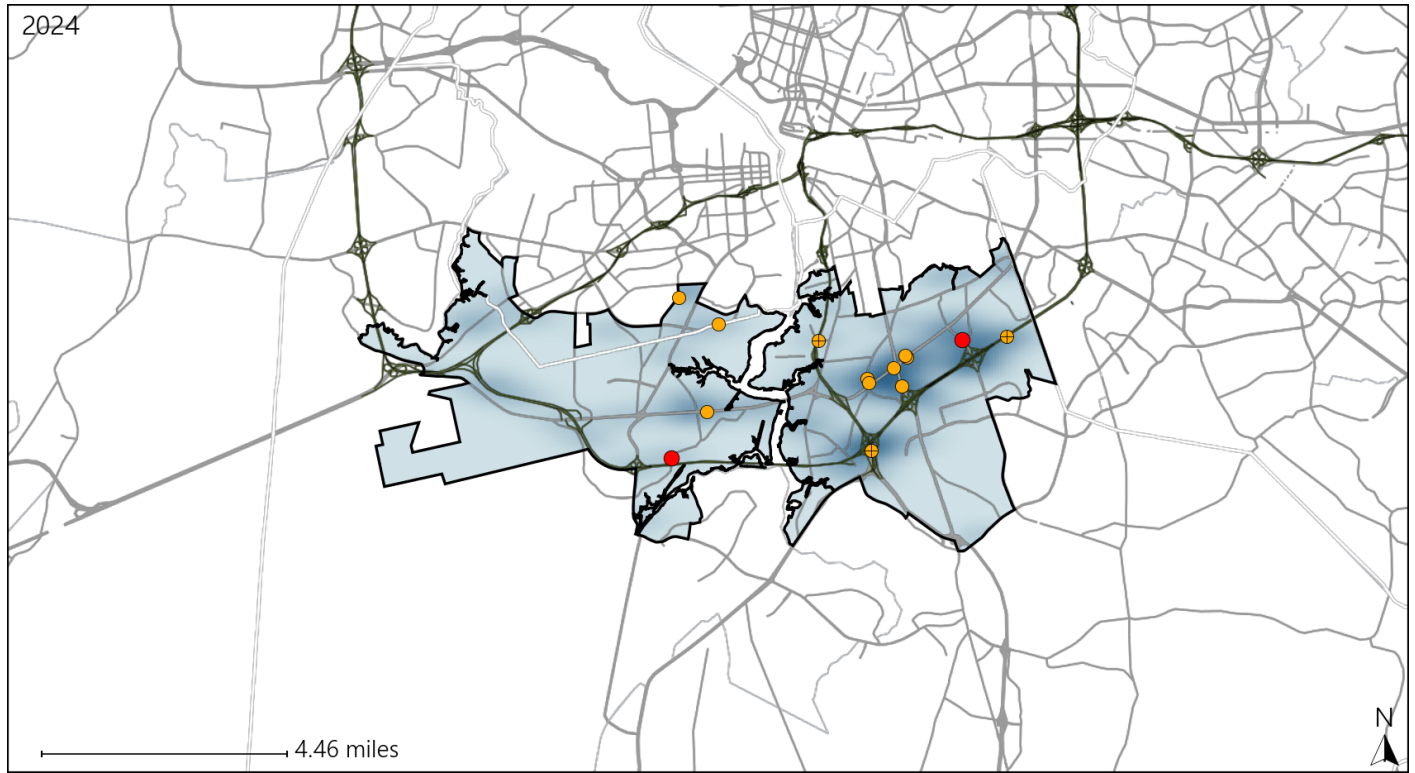


Available Crash Data - Calendar Year (CY)	CY 2021	CY 2022	CY 2023	CY 2024
Total Crashes	1530	1513	1599	1449
Fatal Crashes	13	7	10	8
Injury Crashes	554	570	618	573

# Virginia House District 91 Alcohol Crash Statistics

Report Generated March, 2025

	Count	Highest Time Period(s)	Highest Day(s)	Highest Month(s)
<b>Fatal Crashes</b>	<b>2</b>	6:00am - 8:59am	Saturday • Thursday	June • September
<b>Resulting Fatalities</b>	<b>2</b>	6:00pm - 8:59pm (100%)	(100%)	(100%)
<b>Serious Injury Crashes</b>	<b>12</b>	9:00pm - 11:59pm Midnight - 2:59am (50%)	Saturday (42%)	November (33%)



### House District 91 Alcohol-Related Crashes

Interstate Crashes                      Non-interstate Crashes  
 ● Fatal                                      ● Fatal  
 ⊕ Serious Injury                          ⊕ Serious Injury

The blue gradient represents the density of all alcohol-related crashes.

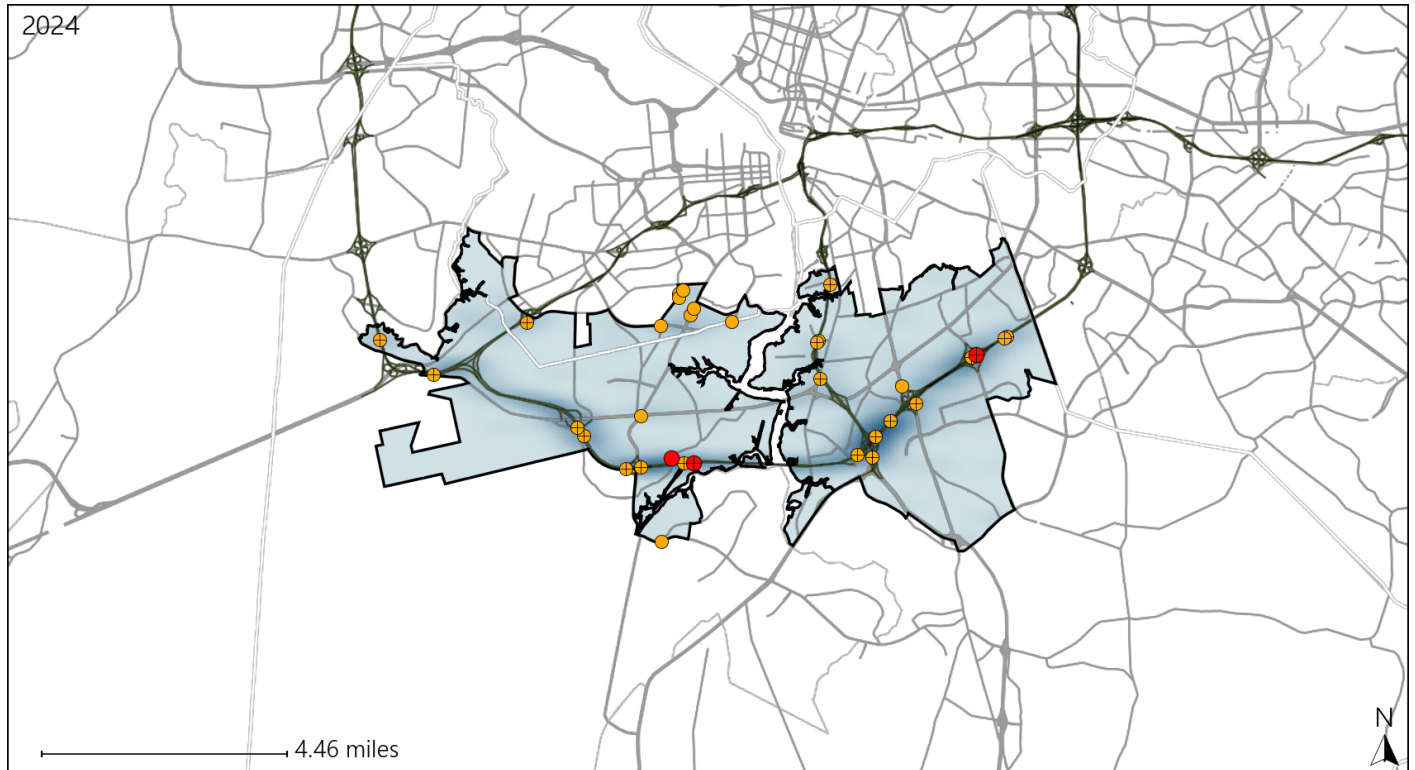


Available Crash Data - Calendar Year (CY)	CY 2021	CY 2022	CY 2023	CY 2024
Total Crashes	1530	1513	1599	1449
Fatal Crashes	13	7	10	8
Injury Crashes	554	570	618	573
Alcohol-Related Fatal Crashes	5	2	2	2
Percent of Alcohol-Related Fatal Crashes to Total Fatal Crashes	38%	29%	20%	25%
Alcohol-Related Injury Crashes	33	33	43	40
Percent of Alcohol-Related Injury Crashes to Total Injury Crashes	6%	6%	7%	7%

# Virginia House District 91 Speed Crash Statistics

Report Generated March, 2025

	Count	Highest Time Period(s)	Highest Day(s)	Highest Month(s)
<b>Fatal Crashes</b>	<b>3</b>	<b>9:00pm - 11:59pm</b>	<b>Saturday • Sunday</b>	<b>August • June</b>
<b>Resulting Fatalities</b>	<b>3</b>	(67%)	(66%)	(66%)
<b>Serious Injury Crashes</b>	<b>31</b>	<b>3:00pm - 5:59pm</b>	<b>Friday • Monday</b>	<b>June</b>
		(29%)	(38%)	(19%)



## House District 91 Speed-Related Crashes

Interstate Crashes

- Fatal
- Serious Injury

Non-interstate Crashes

- Fatal
- Serious Injury

The blue gradient represents the density of all speed-related crashes.

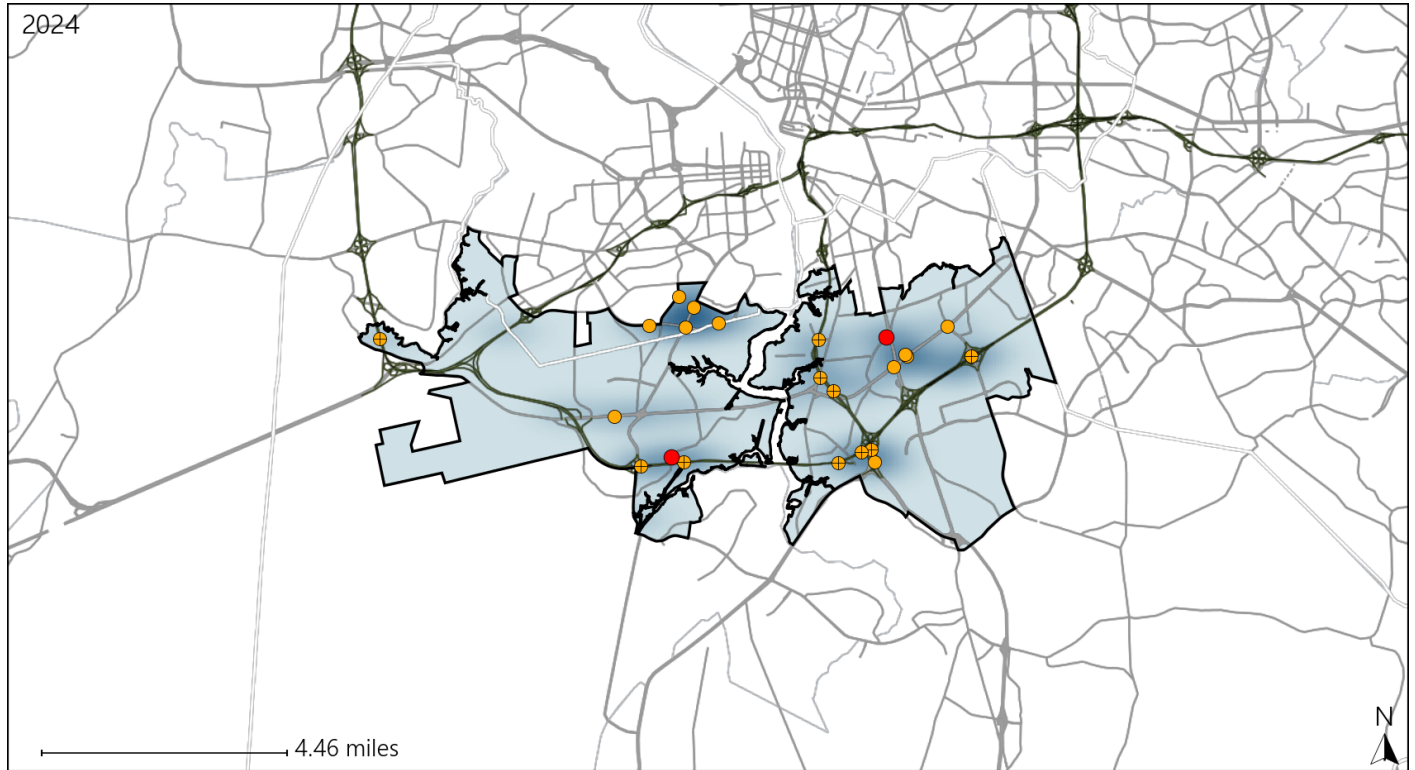


Available Crash Data - Calendar Year (CY)	CY 2021	CY 2022	CY 2023	CY 2024
Total Crashes	1530	1513	1599	1449
Fatal Crashes	13	7	10	8
Injury Crashes	554	570	618	573
Speed-Related Fatal Crashes	7	3	1	3
Percent of Speed-Related Fatal Crashes to Total Fatal Crashes	54%	43%	10%	38%
Speed-Related Injury Crashes	120	133	113	124
Percent of Speed-Related Injury Crashes to Total Injury Crashes	22%	23%	18%	22%

# Virginia House District 91 Unrestrained Crash Statistics

Report Generated March, 2025

	Count	Highest Time Period(s)	Highest Day(s)	Highest Month(s)
<b>Fatal Crashes</b>	<b>2</b>	<b>6:00am - 8:59am</b>	<b>Saturday • Sunday</b>	<b>June • May</b>
<b>Unrestrained Fatalities</b>	<b>2</b>	<b>6:00pm - 8:59pm</b> (100%)	<b>(100%)</b>	<b>(100%)</b>
<b>Serious Injury Crashes</b>	<b>21</b>	<b>Midnight - 2:59am</b>	<b>Saturday • Sunday</b>	<b>June • November</b>
		<b>(33%)</b>	<b>(58%)</b>	<b>(38%)</b>



## House District 91 Unrestrained-Related Crashes

Interstate Crashes

Non-interstate Crashes

- Fatal
- Serious Injury

- Fatal
- Serious Injury

The blue gradient represents the density of all unrestrained-related crashes.

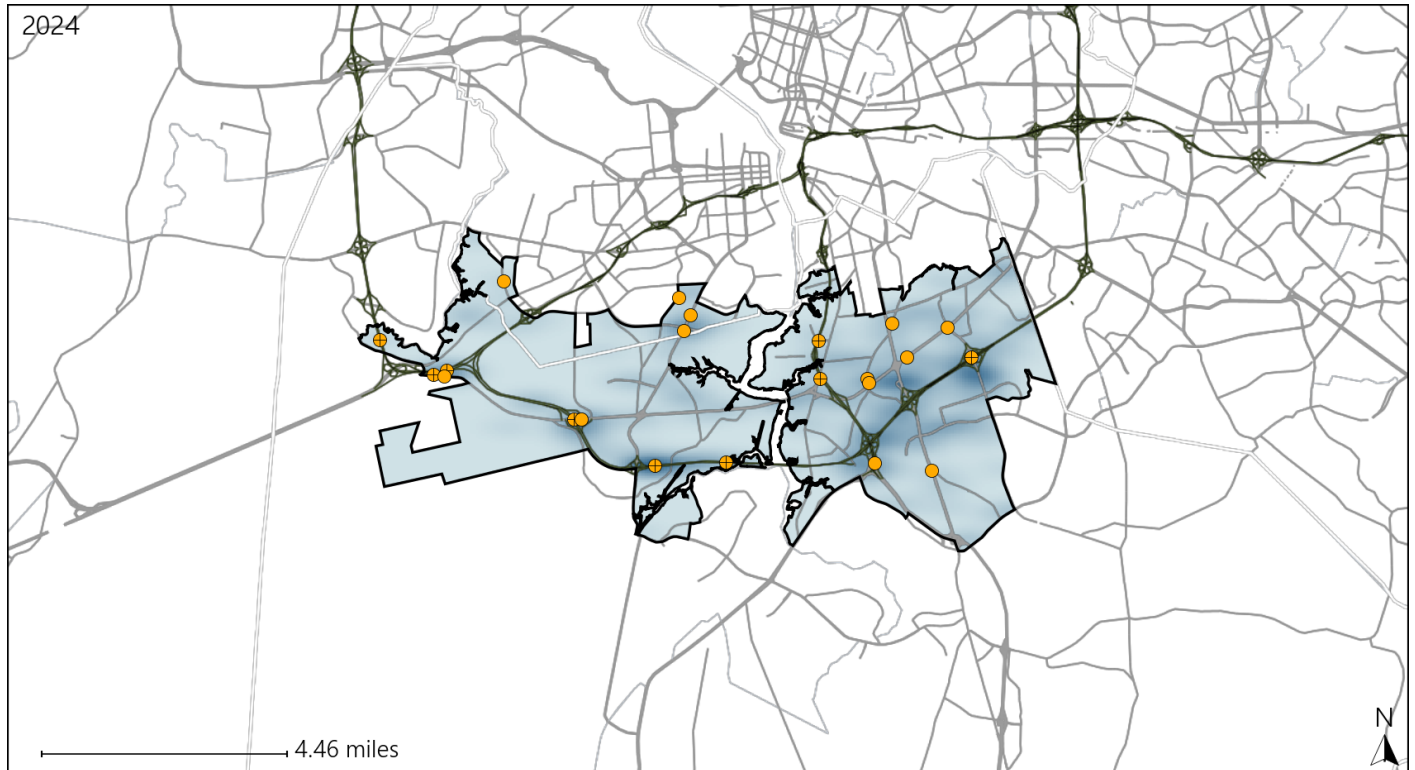


Available Crash Data - Calendar Year (CY)	CY 2021	CY 2022	CY 2023	CY 2024
Total Crashes	1530	1513	1599	1449
Fatalities	14	7	10	8
Injuries	913	924	1050	932
Unrestrained Fatalities	4	2	3	2
Percent of Unrestrained Fatalities to Total Fatalities	29%	29%	30%	25%
Unrestrained Injuries	41	44	58	47
Percent of Unrestrained Injuries to Total Injuries	4%	5%	6%	5%

# Virginia House District 91 Distracted Driving Crash Statistics

Report Generated March, 2025

	Count	Highest Time Period(s)	Highest Day(s)	Highest Month(s)
<b>Fatal Crashes</b>	0	-	-	-
<b>Resulting Fatalities</b>	0	-	-	-
<b>Serious Injury Crashes</b>	22	3:00pm - 5:59pm (27%)	Sunday (27%)	April • January (28%)



## House District 91 Distracted Driving-Related Crashes

- |                    |                        |
|--------------------|------------------------|
| Interstate Crashes | Non-interstate Crashes |
| ● Fatal            | ● Fatal                |
| ⊕ Serious Injury   | ⊕ Serious Injury       |

The blue gradient represents the density of all distracted driving-related crashes.



Available Crash Data - Calendar Year (CY)	CY 2021	CY 2022	CY 2023	CY 2024
Total Crashes	1530	1513	1599	1449
Fatal Crashes	13	7	10	8
Injury Crashes	554	570	618	573
Distracted Driving-Related Fatal Crashes	2	0	2	0
Percent of Distracted Driving-Related Fatal Crashes to Total Fatal Crashes	15%	0%	20%	0%
Distracted Driving-Related Injury Crashes	88	92	110	93
Percent of Distracted Driving-Related Injury Crashes to Total Injury Crashes	16%	16%	18%	16%