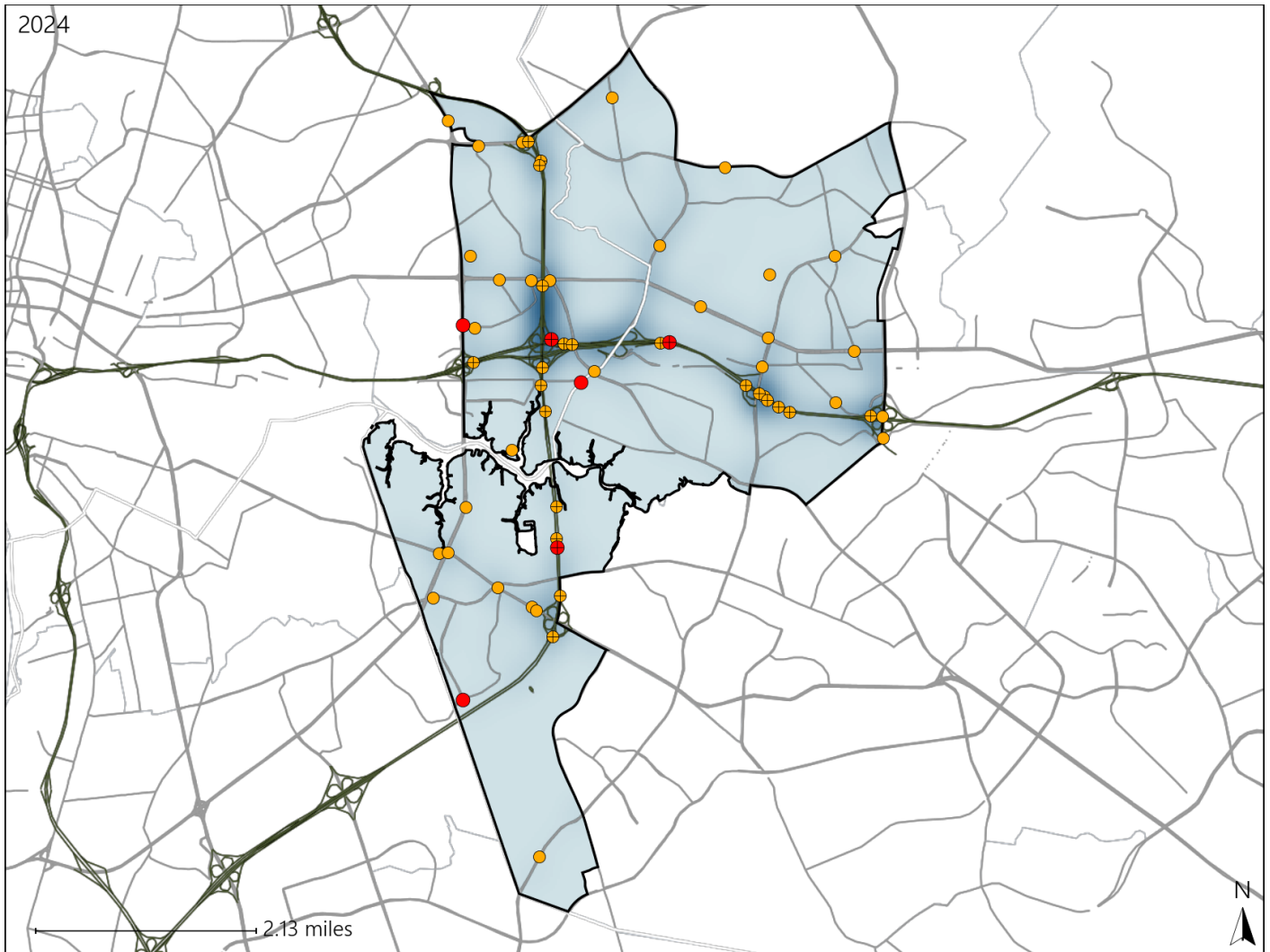


# Virginia House District 95 Crash Statistics

Report Generated March, 2025

|                               | Count     | Highest Time Period(s)                            | Highest Day(s)  | Highest Month(s)    |
|-------------------------------|-----------|---|-----------------|---------------------|
| <b>Fatal Crashes</b>          | <b>6</b>  | <b>Midnight - 2:59am</b>                          | <b>Saturday</b> | <b>June • March</b> |
| <b>Resulting Fatalities</b>   | <b>6</b>  | (67%)   | (50%)           | (66%)               |
| <b>Serious Injury Crashes</b> | <b>52</b> | <b>6:00pm - 8:59pm</b><br><b>9:00pm - 11:59pm</b> | <b>Friday</b>   | <b>November</b>     |
|                               |           | (34%)   | (31%)           | (15%)               |



### House District 95 Crashes

Interstate Crashes

- Fatal
- Serious Injury

Non-interstate Crashes

- Fatal
- Serious Injury

The blue gradient represents the density of all crashes.

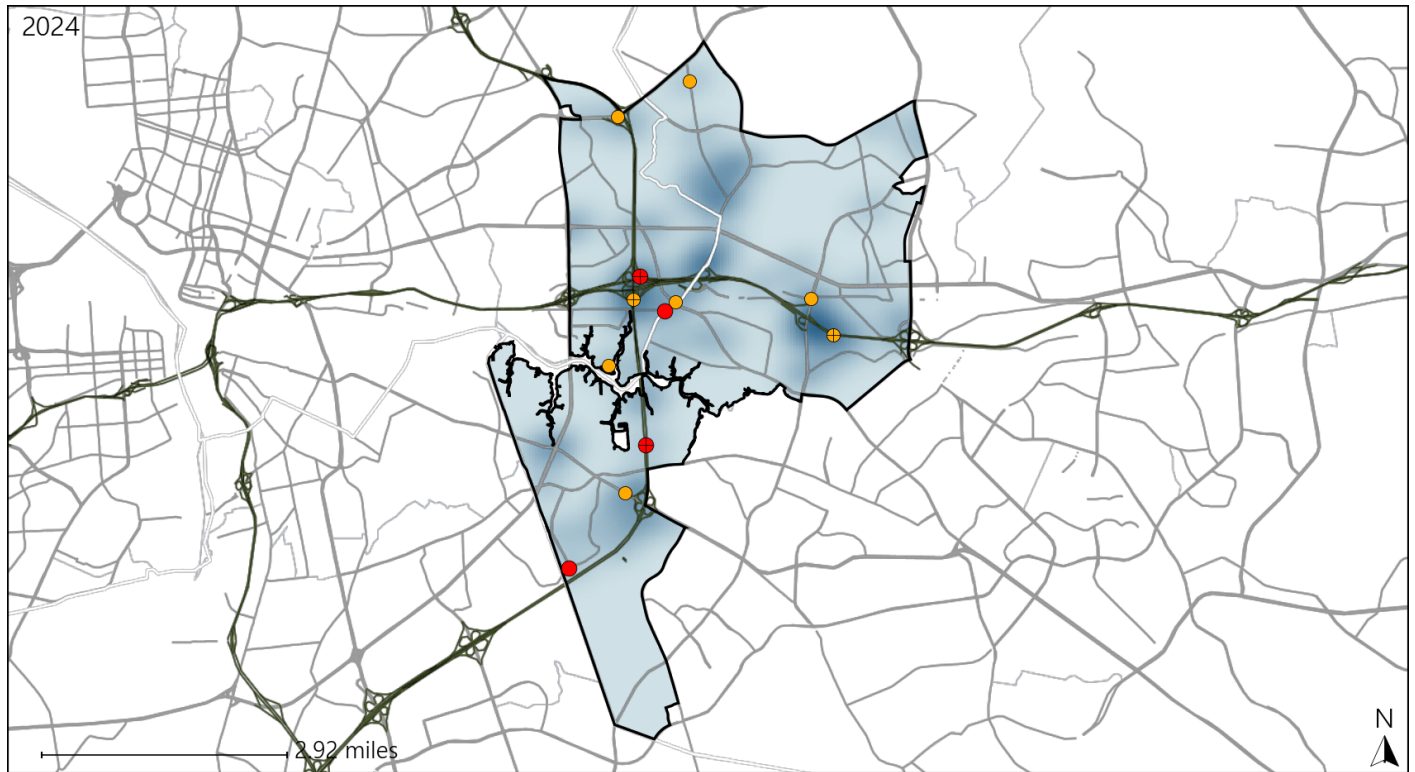


| Available Crash Data - Calendar Year (CY) | CY 2021     | CY 2022     | CY 2023     | CY 2024     |
|---|-------------|-------------|-------------|-------------|
| <b>Total Crashes</b>                      | <b>2053</b> | <b>1769</b> | <b>1857</b> | <b>2099</b> |
| <b>Fatal Crashes</b>                      | <b>10</b>   | <b>7</b>    | <b>11</b>   | <b>6</b>    |
| <b>Injury Crashes</b>                     | <b>657</b>  | <b>523</b>  | <b>541</b>  | <b>570</b>  |

# Virginia House District 95 Alcohol Crash Statistics

Report Generated March, 2025

|                               | Count    | Highest Time Period(s)                            | Highest Day(s)         | Highest Month(s)       |
|-------------------------------|----------|---|------------------------|------------------------|
| <b>Fatal Crashes</b>          | <b>4</b> | <b>Midnight - 2:59am</b>                          | <b>Saturday</b>        | <b>February • July</b> |
| <b>Resulting Fatalities</b>   | <b>4</b> | <b>(75%)</b>                                      | <b>(50%)</b>           | <b>(50%)</b>           |
| <b>Serious Injury Crashes</b> | <b>8</b> | <b>3:00am - 5:59am</b><br><b>9:00pm - 11:59pm</b> | <b>Friday • Monday</b> | <b>July • May</b>      |
|                               |          | <b>(50%)</b>                                      | <b>(50%)</b>           | <b>(50%)</b>           |



## House District 95 Alcohol-Related Crashes

Interstate Crashes

- Fatal
- ⊕ Serious Injury

Non-interstate Crashes

- Fatal
- Serious Injury

The blue gradient represents the density of all alcohol-related crashes.

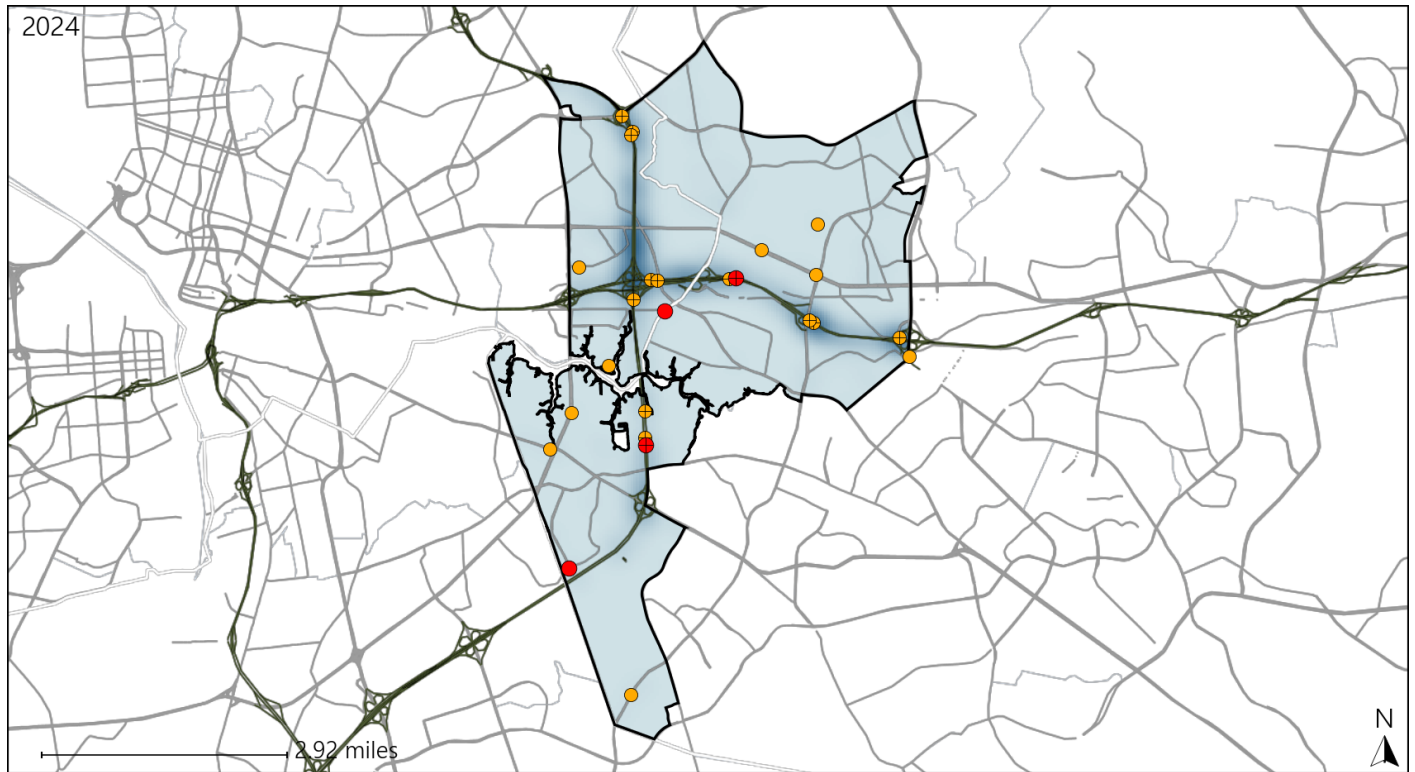


| Available Crash Data - Calendar Year (CY)                                | CY 2021     | CY 2022     | CY 2023     | CY 2024     |
|--|-------------|-------------|-------------|-------------|
| <b>Total Crashes</b>   | <b>2053</b> | <b>1769</b> | <b>1857</b> | <b>2099</b> |
| <b>Fatal Crashes</b>   | <b>10</b>   | <b>7</b>    | <b>11</b>   | <b>6</b>    |
| <b>Injury Crashes</b>  | <b>657</b>  | <b>523</b>  | <b>541</b>  | <b>570</b>  |
| <b>Alcohol-Related Fatal Crashes</b>                                     | <b>7</b>    | <b>2</b>    | <b>5</b>    | <b>4</b>    |
| <b>Percent of Alcohol-Related Fatal Crashes to Total Fatal Crashes</b>   | <b>70%</b>  | <b>29%</b>  | <b>45%</b>  | <b>67%</b>  |
| <b>Alcohol-Related Injury Crashes</b>                                    | <b>55</b>   | <b>32</b>   | <b>38</b>   | <b>33</b>   |
| <b>Percent of Alcohol-Related Injury Crashes to Total Injury Crashes</b> | <b>8%</b>   | <b>6%</b>   | <b>7%</b>   | <b>6%</b>   |

# Virginia House District 95 Speed Crash Statistics

Report Generated March, 2025

|                               | Count     | Highest Time Period(s)                            | Highest Day(s)  | Highest Month(s) |
|-------------------------------|-----------|---|-----------------|------------------|
| <b>Fatal Crashes</b>          | <b>4</b>  | <b>Midnight - 2:59am</b>                          | <b>Saturday</b> | <b>March</b>     |
| <b>Resulting Fatalities</b>   | <b>4</b>  | (75%)   | (75%)           | (50%)            |
| <b>Serious Injury Crashes</b> | <b>21</b> | <b>3:00pm - 5:59pm</b><br><b>9:00pm - 11:59pm</b> | <b>Friday</b>   | <b>August</b>    |
|                               |           | (38%)   | (43%)           | (24%)            |



## House District 95 Speed-Related Crashes

Interstate Crashes

- Fatal
- ⊕ Serious Injury

Non-interstate Crashes

- Fatal
- Serious Injury

The blue gradient represents the density of all speed-related crashes.

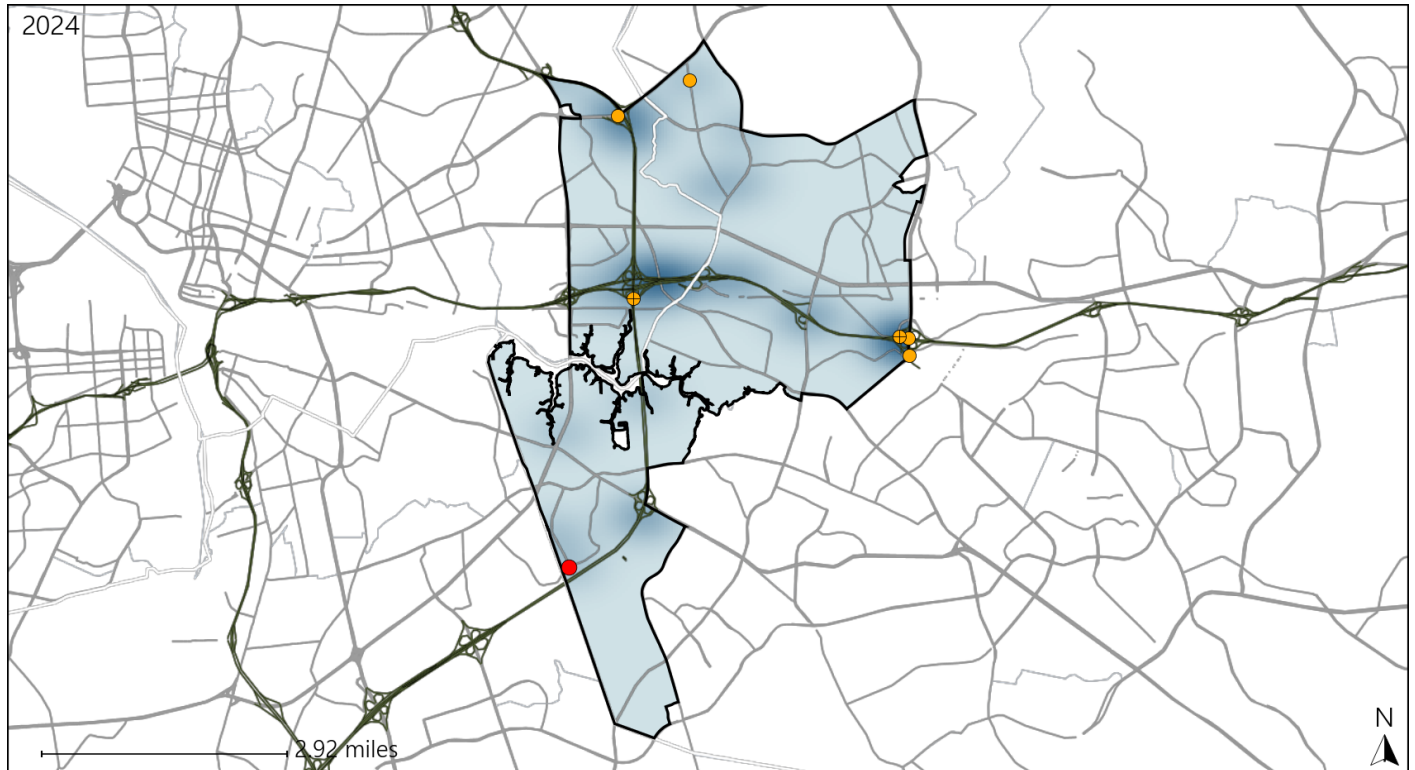


| Available Crash Data - Calendar Year (CY)                       | CY 2021 | CY 2022 | CY 2023 | CY 2024 |
|---|---------|---------|---------|---------|
| Total Crashes   | 2053    | 1769    | 1857    | 2099    |
| Fatal Crashes   | 10      | 7       | 11      | 6       |
| Injury Crashes  | 657     | 523     | 541     | 570     |
| Speed-Related Fatal Crashes                                     | 5       | 4       | 6       | 4       |
| Percent of Speed-Related Fatal Crashes to Total Fatal Crashes   | 50%     | 57%     | 55%     | 67%     |
| Speed-Related Injury Crashes                                    | 179     | 134     | 135     | 163     |
| Percent of Speed-Related Injury Crashes to Total Injury Crashes | 27%     | 26%     | 25%     | 29%     |

# Virginia House District 95 Unrestrained Crash Statistics

Report Generated March, 2025

|                                | Count    | Highest Time Period(s)   | Highest Day(s)         | Highest Month(s) |
|--------------------------------|----------|--------------------------|------------------------|------------------|
| <b>Fatal Crashes</b>           | <b>1</b> | <b>Midnight - 2:59am</b> | <b>Saturday</b>        | <b>March</b>     |
| <b>Unrestrained Fatalities</b> | <b>1</b> | <b>(100%)</b>            | <b>(100%)</b>          | <b>(100%)</b>    |
| <b>Serious Injury Crashes</b>  | <b>6</b> | <b>9:00pm - 11:59pm</b>  | <b>Friday • Sunday</b> | <b>August</b>    |
|                                |          | <b>(50%)</b>             | <b>(66%)</b>           | <b>(50%)</b>     |



### House District 95 Unrestrained-Related Crashes

Interstate Crashes

Non-interstate Crashes

- Fatal
- Serious Injury

- Fatal
- Serious Injury

The blue gradient represents the density of all unrestrained-related crashes.

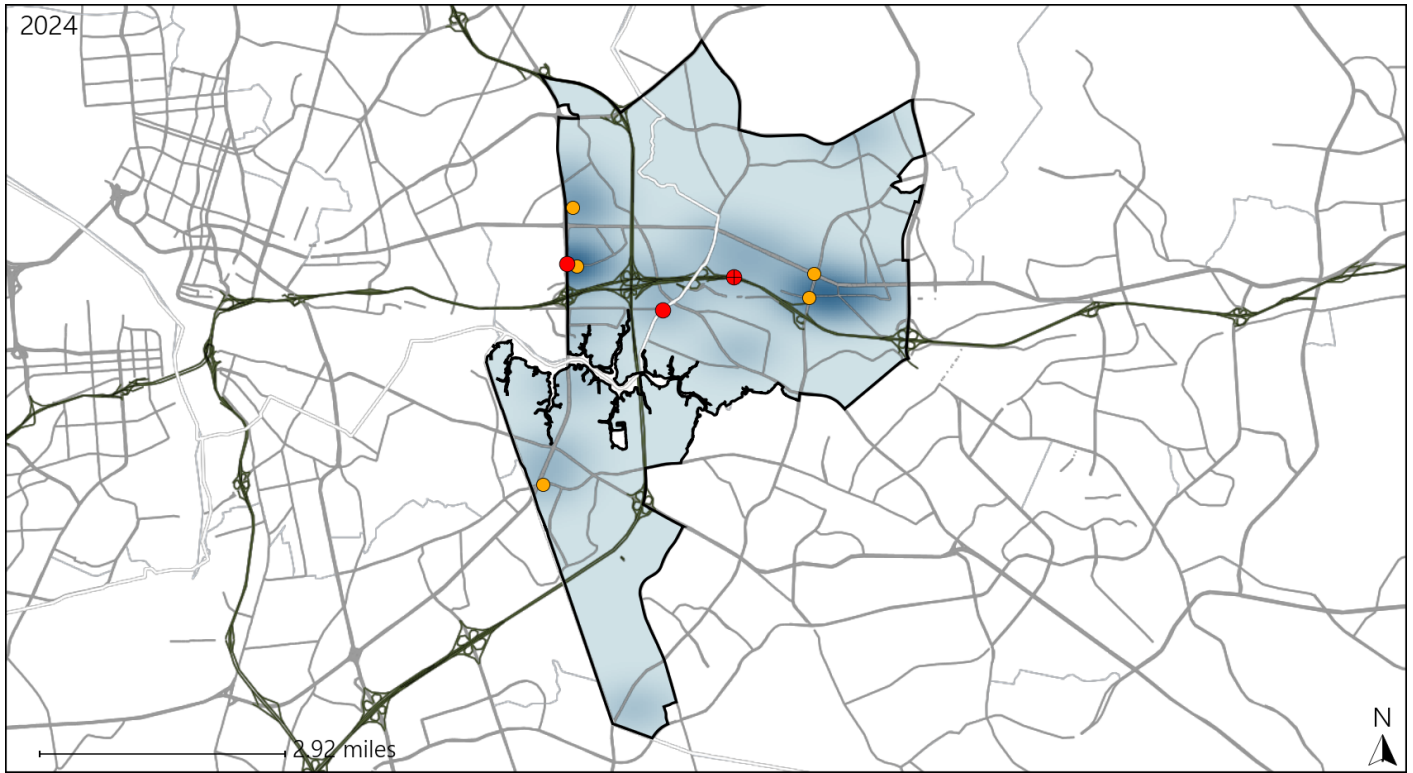


| Available Crash Data - Calendar Year (CY)                     | CY 2021     | CY 2022     | CY 2023     | CY 2024     |
|---|-------------|-------------|-------------|-------------|
| <b>Total Crashes</b>  | <b>2053</b> | <b>1769</b> | <b>1857</b> | <b>2099</b> |
| <b>Fatalities</b>   | <b>11</b>   | <b>7</b>    | <b>11</b>   | <b>6</b>    |
| <b>Injuries</b>   | <b>1024</b> | <b>829</b>  | <b>856</b>  | <b>891</b>  |
| <b>Unrestrained Fatalities</b>                                | <b>1</b>    | <b>2</b>    | <b>3</b>    | <b>1</b>    |
| <b>Percent of Unrestrained Fatalities to Total Fatalities</b> | <b>9%</b>   | <b>29%</b>  | <b>27%</b>  | <b>17%</b>  |
| <b>Unrestrained Injuries</b>                                  | <b>40</b>   | <b>28</b>   | <b>23</b>   | <b>39</b>   |
| <b>Percent of Unrestrained Injuries to Total Injuries</b>     | <b>4%</b>   | <b>3%</b>   | <b>3%</b>   | <b>4%</b>   |

# Virginia House District 95 Pedestrian Crash Statistics

Report Generated March, 2025

|                               | Count    | Highest Time Period(s)                      | Highest Day(s)    | Highest Month(s) |
|-------------------------------|----------|---|-------------------|------------------|
| <b>Fatal Crashes</b>          | <b>3</b> | 6:00pm - 8:59pm                             | Friday • Saturday | February • June  |
| <b>Pedestrian Fatalities</b>  | <b>3</b> | 9:00pm - 11:59pm<br>(66%)                   | (66%)             | (66%)            |
| <b>Serious Injury Crashes</b> | <b>5</b> | 3:00pm - 5:59pm<br>6:00am - 8:59am<br>(40%) | Friday<br>(80%)   | July<br>(40%)    |



### House District 95 Pedestrian-Related Crashes

- |                    |                        |
|--------------------|------------------------|
| Interstate Crashes | Non-interstate Crashes |
| ● Fatal            | ● Fatal                |
| ⊕ Serious Injury   | ⊕ Serious Injury       |

The blue gradient represents the density of all pedestrian-related crashes.

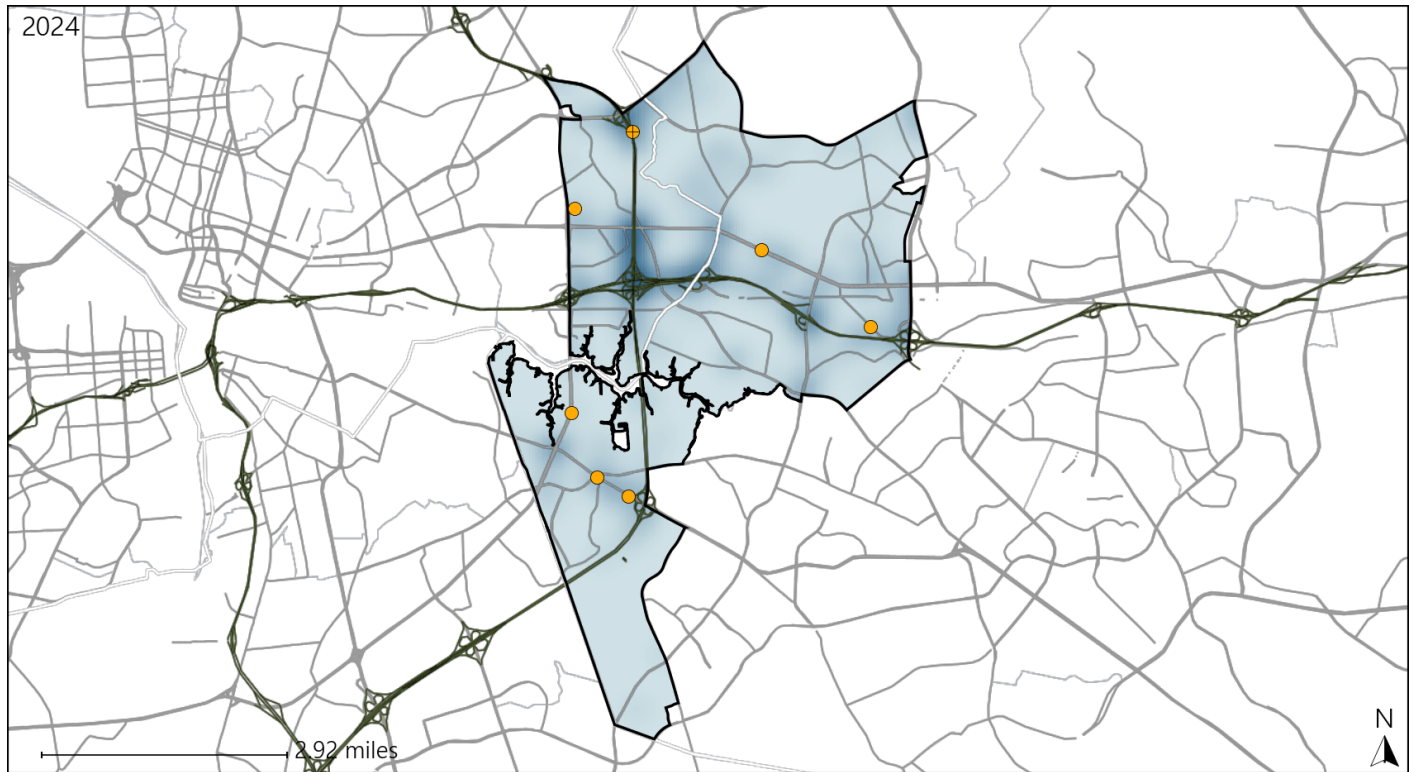


| Available Crash Data - Calendar Year (CY)                            | CY 2021 | CY 2022 | CY 2023 | CY 2024 |
|--|---------|---------|---------|---------|
| Total Crashes  | 2053    | 1769    | 1857    | 2099    |
| Fatal Crashes  | 10      | 7       | 11      | 6       |
| Injury Crashes   | 657     | 523     | 541     | 570     |
| Pedestrian-Related Fatal Crashes                                     | 4       | 3       | 2       | 3       |
| Percent of Pedestrian-Related Fatal Crashes to Total Fatal Crashes   | 40%     | 43%     | 18%     | 50%     |
| Pedestrian-Related Injury Crashes                                    | 20      | 22      | 26      | 22      |
| Percent of Pedestrian-Related Injury Crashes to Total Injury Crashes | 3%      | 4%      | 5%      | 4%      |

# Virginia House District 95 Distracted Driving Crash Statistics

Report Generated March, 2025

|                               | Count | Highest Time Period(s)                      | Highest Day(s)            | Highest Month(s) |
|-------------------------------|-------|---|---------------------------|------------------|
| <b>Fatal Crashes</b>          | 0     | -   | -                         | -                |
| <b>Resulting Fatalities</b>   | 0     | -   | -                         | -                |
| <b>Serious Injury Crashes</b> | 7     | 6:00am - 8:59am<br>6:00pm - 8:59pm<br>(58%) | Monday • Tuesday<br>(58%) | January<br>(29%) |



## House District 95 Distracted Driving-Related Crashes

- |                    |                        |
|--------------------|------------------------|
| Interstate Crashes | Non-interstate Crashes |
| ● Fatal            | ● Fatal                |
| ⊕ Serious Injury   | ● Serious Injury       |

The blue gradient represents the density of all distracted driving-related crashes.



| Available Crash Data - Calendar Year (CY)                                    | CY 2021 | CY 2022 | CY 2023 | CY 2024 |
|--|---------|---------|---------|---------|
| Total Crashes  | 2053    | 1769    | 1857    | 2099    |
| Fatal Crashes  | 10      | 7       | 11      | 6       |
| Injury Crashes   | 657     | 523     | 541     | 570     |
| Distracted Driving-Related Fatal Crashes                                     | 0       | 1       | 0       | 0       |
| Percent of Distracted Driving-Related Fatal Crashes to Total Fatal Crashes   | 0%      | 14%     | 0%      | 0%      |
| Distracted Driving-Related Injury Crashes                                    | 105     | 72      | 90      | 80      |
| Percent of Distracted Driving-Related Injury Crashes to Total Injury Crashes | 16%     | 14%     | 17%     | 14%     |